

# WEBEL TECHNOLOGY LIMITED

## **NOTICE INVITING e-TENDER**

e- Tender are invited from reputed bidders for the **Design, Supply, Installation, Commissioning and Maintenance of Integrated Rainwater Harvesting System at Purulia Layer Farm, Gobindapur, Purulia, West Bengal of West Bengal Livestock Corporation Ltd.** Reputed bidders having sufficient experience and credentials for successful completion of "Similar Nature" of work in a Government Department/PSU/Autonomous Body.

1.	Tender No. & Date	WTL/ARD/RWH/25-26/030 dated 25.09.2025
2.	Tender Version No.	1.0
3.	Brief description of material	Design, Supply, Installation, Commissioning and Maintenance of <b>Integrated Rainwater Harvesting System</b> at Purulia Layer Farm, Gobindapur, Purulia, West Bengal of West Bengal
4.	Tender Fee	Rs.6000.00 (Rupees Six Thousand only). The amount to be transferred online through e-tender portal.
5.	Earnest Money Deposit	Rs. 600000.00 (Rupees Six Lakhs only). The amount to be transferred online through e-tender portal.
6.	Date of Downloading/Sale of Tender document	25.09.2025
7.	Site Visit	Bidders are requested to visit site for pre-tender survey on 09.10.2025 or 10.10.2025 (Between 11am to 3pm) at Purulia Layer Farm, Gobindapur, Purulia, West Bengal of West Bengal Livestock Corporation Ltd.  Bidder has to send a pre-intimation on site visit via email about site visit by 08.10.2025 till 15:00 Hrs to the Purchase Department ( <a href="mailto:purchase@wtl.co.in">purchase@wtl.co.in</a> )
8.	Pre-Bid Meeting date & time	14.10.2025 at 12.00 Hrs. <ul style="list-style-type: none"><li>• Pre-Bid meeting will be organized at WTL Saltlake office.</li><li>• Only queries as per format (Section - M) reaching WTL by 13.10.2025 at 15.00 Hrs. will be taken for decision.</li><li>• Queries will be sent to Purchase Department (<a href="mailto:purchase@wtl.co.in">purchase@wtl.co.in</a>)</li></ul>
9.	Bid Submission Start date & time	18.10.2025 at 13.00 hrs.
10.	Last date & time of EMD & Tender Fee submission intimation.	Before Uploading of Tender
11.	Last date & time of Bid Submission	29.10.2025 at 12.00 hrs.
12.	Date & time of Technical Bid Opening	31.10.2025 at 12.00 hrs.
13.	WTL Address	WEBEL TECHNOLOGY LIMITED (A Govt. of West Bengal Undertaking) Plot - 5, Block – BP, Sector – V, Salt Lake City, Kolkata – 700091.
14.	Contact person	033-23673403-06

## WEBEL TECHNOLOGY LIMITED

1. Intending bidder may download the tender documents from the website <https://wbtenders.gov.in> directly with the help of Digital Signature Certificate. Necessary Tender fee may be remitted online through e-tender portal in favour of “Webel Technology Limited” and also to be documented through e-filing. Necessary Earnest Money Deposit (EMD) may be remitted online through e-tender portal in favour of “Webel Technology Limited” and also to be documented through e-filing.
2. Both Techno Commercial Bid and Financial Bid are to be submitted concurrently duly digitally signed in the website <https://wbtenders.gov.in>.
3. Tender documents may be downloaded from website and submission of Techno Commercial Bid and Financial Bid will be done as per Time Schedule stated in Section – C of this Tender Document.
4. The Financial Bid of the prospective Bidder will be considered only if the Techno Commercial Bid of the bidder is found qualified by the Tender Committee. The decision of the ‘Tender Committee’ will be final and absolute in this respect. The list of Qualified Bidders will be displayed in the website.
5. All clarifications / corrigenda will be published only on the <https://wbtenders.gov.in>.

# **WEBEL TECHNOLOGY LIMITED**

## **CONTENTS OF THE TENDER DOCUMENT**

The Tender document comprises of the following:

<b>SECTION – A:</b>	<b>SCOPE OF WORK</b>
<b>SECTION – B:</b>	<b>SPECIFICATIONS &amp; ESTIMATES</b>
<b>SECTION – C:</b>	<b>ELIGIBILITY CRITERIA</b>
<b>SECTION – D:</b>	<b>DATE AND TIME SCHEDULE</b>
<b>SECTION – E:</b>	<b>INSTRUCTIONS TO BIDDER</b>
<b>SECTION – F:</b>	<b>BID FORM</b>
<b>SECTION – G:</b>	<b>TECHNO COMMERCIAL EVALUATION &amp; AWARDING OF CONTRACT</b>
<b>SECTION – H:</b>	<b>GUIDANCE FOR E-TENDERING</b>
<b>SECTION – I:</b>	<b>BILL OF MATERIAL</b>
<b>SECTION – J:</b>	<b>DETAILS OF ORDER EXECUTEDBY BIDDER</b>
<b>SECTION – K:</b>	<b>FINANCIAL CAPABILITY OF BIDDER</b>
<b>SECTION – L:</b>	<b>BIDDERS’S DETAILS</b>
<b>SECTION – M:</b>	<b>PRE-BID MEETING QUERY</b>
<b>SECTION – N:</b>	<b>LIST OF CLIENTS OF SIMILAR ORDERS</b>
<b>SECTION – O:</b>	<b>DECLARATION BY THE TENDERER</b>
<b>SECTION – P:</b>	<b>PROFORMA FOR PERFORMANCE BANK GUARANTEE</b>
<b>SECTION – Q:</b>	<b>NIT DECLARATION FOR BIDDER</b>
<b>SECTION – R:</b>	<b>TECHNICAL &amp; CERTIFICATION COMPLIANCE</b>
<b>SECTION – S:</b>	<b>MANUFACTURER’S AUTHORIZATION FORM</b>
<b>SECTION – T:</b>	<b>SUPPORT SERVICE CENTER &amp; MANPOWER DETAILS OF OEM</b>
<b>SECTION – U:</b>	<b>CHECKLIST FOR ELIGIBILITY CRITERIA</b>
<b>SECTION – V:</b>	<b>DRAWING REFERENCES</b>

# WEBEL TECHNOLOGY LIMITED

## SECTION – A

### SCOPE OF WORK

WTL wants to engage an agency who will be responsible for the Design, Supply, Installation, Commissioning and Maintenance of Integrated Rainwater Harvesting System at Purulia Layer Farm, Gobindapur, Purulia, West Bengal of West Bengal Live Stock Corporation Ltd. under ARD.

### **Background**

The **Central Ground Water Board (CGWB)** in its 2022 report highlighted several critical concerns regarding the water situation in **Purulia district, West Bengal**:

- 1. Drought-Prone & Water-Scarce Region:**  
Purulia district has been classified as a drought-prone and water-scarce zone. Seasonal rainfall is unevenly distributed, and groundwater resources are insufficient to meet the rising demand. Further, **iron and fluoride contamination** are identified as major water quality issues, making safe water availability even more challenging.
- 2. Complex Hydrogeological Structure:**  
The district's hydrogeology, characterized by hard rock formations, significantly restricts the scope for large-scale groundwater development. Traditional borewell and deep tube-well solutions are largely ineffective due to the presence of impermeable rock layers close to the surface.
- 3. Increasing Demand-Supply Gap:**  
Rapid urbanization, industrial development, and population growth have accelerated the demand for potable and non-potable water. Meanwhile, the available groundwater and surface water sources remain limited, widening the **gap between water demand and supply**.

To address these concerns, the CGWB has strongly recommended the adoption of **Rainwater Harvesting (RWH)** practices. Both **rooftop harvesting** and **surface runoff harvesting** were advised to improve not only the **quantity of available water** but also its **quality**, by reducing reliance on contaminated and depleted groundwater resources.

### **Objectives: Integrated Rainwater Harvesting System at Purulia Layer Farm**

Rainwater harvesting at the **Purulia Layer Farm** is essential to ensure water sustainability, operational stability, and cost efficiency. The following objectives underline the importance of this initiative:

- 1. Daily Water Requirement**
  - The farm has a **baseline water requirement of 80,000 litres per day**, which rises to **1,20,000 litres per day during peak summer months** due to higher demand for cooling, cleaning, and livestock needs.
  - Rainwater harvesting will supplement existing supply sources and bridge the seasonal demand gap.

## WEBEL TECHNOLOGY LIMITED

### 2. Addressing Water Shortage at the Farm

- Geotechnical investigations confirm that **hard rock occurs from 2.0 metres below ground level**, making borewell drilling unfeasible.
- Currently, the farm depends entirely on the **Public Health Engineering Department (PHED)** water supply, transported via pipeline from a pumping station located **2 km away**.
- The daily allocation from PHED is **1,00,000 litres**, which is stored in an on-site overhead tank of equal capacity. However, this arrangement leaves little buffer for increased demand or emergency situations.

### 3. Conserving Water Resources

- Adoption of RWH will reduce dependency on PHED-supplied water.
- It will help conserve scarce freshwater reserves, ensuring their availability for **domestic and community use** in the district.

### 4. Preventing Waterlogging and Flooding

- Collection and controlled reuse of rainwater will reduce **surface runoff**, thereby minimizing localized **waterlogging and flash flooding** during heavy monsoons.
- This also protects farm infrastructure and surrounding agricultural land.

### 5. Reducing Energy Consumption

- By reducing reliance on water pumped from 2 km away, the farm will save significant **electricity costs** associated with pumping and distribution.
- Lower energy consumption makes the farm's water management system more **environmentally sustainable**.

### 6. Improving Water Quality

- Harvested rainwater is typically **free from salinity, hardness, and harmful chemicals** like fluoride and iron (when collected and stored properly).
- Controlled collection reduces **pollutant runoff** into natural water bodies, contributing to better local environmental health.

### 7. Cost-Effectiveness

- Rainwater harvesting systems involve **low capital investment** compared to alternatives like deep borewell drilling or advanced water treatment plants.
- Once installed, they provide a **sustainable, low-maintenance, and cost-effective** solution for securing the farm's long-term water supply.

## Project Guidelines: Integrated Rainwater Harvesting System for Purulia Layer Farm

Based on a detailed study of the site conditions and expert consultations, the following **project guidelines** are proposed for the design and implementation of an **Integrated Rainwater Harvesting (IRWH) System** at Purulia Layer Farm. The system is aimed at fulfilling the farm's daily and seasonal water demand, reducing dependency on external water supply, and ensuring sustainable water management.

# WEBEL TECHNOLOGY LIMITED

## 1. Rooftop Rainwater Harvesting from Poultry Sheds

Rainwater harvesting will be carried out from the large **roof areas of Layer-1, Layer-2, Layer-3, and the Starter Shed**. Collectively, these structures provide a substantial **catchment area**, making them ideal for capturing significant quantities of rainfall during the monsoon. Properly designed guttering, down-take pipes, and first-flush systems will be installed to ensure maximum collection efficiency and to divert initial runoff containing debris.

## 2. Surface Runoff Harvesting from Farm Premises

In addition to rooftop collection, the **farm's open catchment area** will also be utilized for rainwater harvesting. Surface runoff, which often goes unutilized and causes waterlogging, will be **channelized through lined drains and natural slope adjustments**. After filtration to remove suspended solids and impurities, this water will be directed into reservoirs for storage and reuse.

## 3. Reservoir Construction for Storage Capacity

To meet the farm's large water requirement, it is proposed to construct **multiple reservoirs, each with a capacity of 6.0 lakh litres**. These reservoirs will serve as **primary storage units** for harvested rainwater. The number of reservoirs will be finalized based on the total water demand and anticipated rainfall.

- The reservoirs will be **lined with reinforced concrete or geomembrane sheets** to prevent seepage and contamination.
- Proper fencing, access ladders, and safety features will be incorporated.
- Provision will be made for both inflow from rainwater harvesting systems and outflow to the treatment and distribution systems.

## 4. Water Treatment and Overhead Tank (OHT) Integration

Collected water will undergo **pre-treatment and disinfection** before being utilized. The treated water will be transferred to the **Overhead Tank (OHT)** for gravity-based distribution across the farm. Treatment measures will include:

- **Sedimentation and filtration** to remove turbidity and suspended particles.
- **Chlorination dosing** for disinfection and to ensure bacterial safety.
- Additional filtration, if necessary, to meet potable-quality standards for livestock use.

## 5. Chlorine Dosing and Turbidity Filtration

Given the prevalence of **iron, fluoride, and microbial contamination** in the local water sources, the harvested rainwater will be treated using **chlorine dosing systems** and **multi-stage turbidity filters**. This ensures that the stored and distributed water is **safe, clear, and bacteria-free**, thereby improving poultry health and reducing farm management risks.

## 6. Pumping and Renewable Energy Integration

For water transfer from the reservoirs to the OHT, a **dedicated pumping station** will be installed. To ensure sustainability and reduce electricity costs, the system will incorporate a **Solar Pumping Solution**. This not only reduces dependence on grid power but also aligns with the Government of India's push for renewable energy adoption in agriculture and allied sectors.

## 7. Integrated Monitoring System

To achieve efficient operation, an **IoT-enabled monitoring and control system** will be integrated into the IRWH system. The digital system will provide:

- **Real-time monitoring** of reservoir water levels, flow rates, and pump performance.
- **Quality monitoring sensors** for pH, turbidity, and chlorine residuals.
- **Automated alerts** for maintenance needs or abnormal variations.
- **Data dashboards** accessible to farm management for tracking daily water balance and system efficiency.

This smart integration will ensure that the system is **self-regulating, low-maintenance, and highly reliable**, thereby reducing manual intervention and ensuring water security for the farm throughout the year.

# WEBEL TECHNOLOGY LIMITED

## Purulia Layer Farm, Gobindapur, Purulia



**WEBEL TECHNOLOGY LIMITED**  
**SECTION – B**

**SPECIFICATIONS & ESTIMATES**

The work shall include Survey, Hydraulic Design, Supply, Installation, Engineering Supervision, Testing, and Commissioning of a complete Rooftop Rainwater Harvesting (RWH) system for Purulia Layer Farm. The proposed system is to be designed to collect the entire rooftop runoff water from an approximate **shed area of 76,000 sq.ft.** Comprising Layer-1, Layer-2, Layer-3, and Starter Shed **AND** survey, design, supply, construction, installation, testing, and commissioning of an integrated Rainwater Harvesting (RWH) system to capture runoff rainwater from the designated farm catchment area of about **58000 Square meters** based on the contour layout. The system shall include contour study, soil study, drainage network construction (tributary and main drains), reservoirs, filtration, pumping, solar hybrid system, and delivery pipeline to existing storage and OHT.

This document has been developed with the objective of providing bidders with a comprehensive understanding of the overall project design, its technical requirements, detailed item specifications, and indicative estimates. The intention is to equip the bidder with sufficient clarity to appreciate the scope of work and the functional objectives of the proposed system.

It is imperative that the bidder carefully reviews this document in its entirety, correlates the provided information with actual site conditions, and undertakes a thorough site-level survey along with a detailed contour study. These steps are essential to finalize the precise site layout and to prepare accurate estimates. Both the rooftop rainwater collection arrangements and the surface runoff conveyance mechanisms must be evaluated in an integrated manner to ensure that the final design achieves maximum efficiency, reliability, and sustainability.

Ultimately, the bidder's responsibility is to optimize the system design by aligning technical feasibility with effectiveness, while ensuring adherence to the project's performance objectives. The deliverable should result in a fully integrated rainwater harvesting solution that captures, conveys, and stores water in the most efficient and effective manner.

**A. Survey & Design for Integrated Rainwater Harvesting System for:**

**1. Rooftop Rainwater Collection & Storage system for Purulia Layer Farm**

The work shall include Survey, Hydraulic Design a complete Rooftop Rainwater Harvesting (RWH) system for Purulia Layer Farm. The proposed system is to be designed to collect the entire rooftop runoff water from an approximate **shed area of 76,000 sq.ft.** Comprising Layer-1, Layer-2, Layer-3, and Starter Shed.

**2. Runoff Rainwater Collection & Storage System for Purulia Layer Farm**

The work shall also include survey, design of an integrated Rainwater Harvesting (RWH) system to capture runoff water from the designated farm catchment area of about **58000 Square meters** based on the contour layout. The system shall include contour study, soil study, drainage network construction (tributary and main drains), reservoirs, filtration, pumping, solar hybrid system, and delivery pipeline to existing storage and OHT.

The report shall cover all civil, mechanical, and electrical works necessary to make the installation fully operational on a turnkey basis.

- Submit a **detailed technical report and layout drawings**, including the proposed pipeline path, reservoir design and system integration.
- Submit drawings for **drain layout (main drain + tributary drains)**, reservoir construction, and pumping system based on contour data and site conditions.
- Conduct a **detailed contour study** for the entire farm area to study the topography and recommend the most suitable reservoir location considering existing structures and site conditions.

## WEBEL TECHNOLOGY LIMITED

- Prepare and submit the final layout on the **contour map**, mapping and plotting the present shades, with technical justification for the reservoir site selection, pipeline alignment, catchment area, hydraulic head and drain layout (main drain + tributary drains).
- Carry out **hydraulic design calculations** based on local rainfall data to determine flow rates, gutter sizing, down take pipe diameters, and pipeline class including rainfall analysis, runoff calculations, drain sizing, and reservoir design.

### B. Rooftop Rainwater Collection System

- Supply and Installation of gutters, PVC pipe with slot to insert the edge of the shed or Half Round pipe of size minimum 250mm with average wall thickness of 3.60 mm with Fittings like Joint Bracket, Stop End Outlet, Clamp and Running Outlet. **Estimated Length Approximately 1500M to cover both sides of all 4 sheds for entire length to collect rainwater from the entire roof area.**
- PVC down take pipes of minimum size 160 mm OD with 4.0 mm to 4.6 mm wall thickness which will take water from Gutter and transfer to the pipes on Ground Level. **Estimated Length is approximately 500M with all fittings.**
- Provide metal clamps and brackets with necessary anchoring for proper support of gutters and downpipes.
- Ensure safe scaffolding arrangements for the installation of Gutters and Down take pipe for the entire length during installation.

### C. Primary Filtration for Rooftop Rainwater Collection System

- Provide **minimum 40 nos.** of primary rainwater filters with a self-cleaning mechanism to minimize maintenance requirements.
- Filters shall be designed to work efficiently under both low and high rainfall intensities, with the following working principle:
  - Rainwater enters tangentially into the filter housing, creating angular flow along the periphery.
  - Water passes through an **SS 304 filter element** in angular motion, enabling dirt segregation by cohesive force.
  - Under heavy rainfall, centrifugal force assists in separating debris, sand, and dirt, which are automatically flushed out through a drain outlet.
  - Clean water shall be diverted to the reservoir/recharge well.

### D. Water Conveyance System for Rooftop Rainwater Collection System

- Install underground and above-ground pipelines for carrying water from the sheds to the reservoir:
  - **HDPE pipes of 250 mm, PN-4, PE-100 conforming to IS: 4984 of Estimated length is approximately 2000M**
  - **HDPE pipes of 315 mm OD PN-4, PE-100 conforming to IS: 4984 of Estimated length is approximately 600M**
- All necessary **civil works** including trenching, backfilling, compaction, RCC cutting, repairing, chamber construction, and other related works shall be executed by the contractor for the entire length of pipes.

## WEBEL TECHNOLOGY LIMITED

### E. Drainage Network for Runoff Rainwater Collection System

- Construct main drain of suitable size of length along farm boundary, designed to carry runoff to the proposed reservoirs based on natural contour. **The maximum dimension of the Main Drain shall be 1.0 MTR width X 1.70 MTR depth and the estimated length of the Main Drain is Approximately 1000M**
- Provide tributaries of suitable size and slope, feeding into the main drain based on contour data. **Estimated 12 nos tributary drains of maximum dimension of the tributary drain shall be 0.50 MTR width X 0.70 MTR depth for approximate Length about 1200M**
- Ensure proper excavation, slope maintenance, compaction, and finishing with plaster and exterior paint to minimize erosion.
- Construct sectional chambers and silt traps where necessary.

### F. Reservoir

- Construction of a reservoir of minimum **6,00,000 litres** capacity for storage of harvested rainwater as per the drawing (Attached Annexure #).
- Reservoir construction shall include excavation, RCC/brick lining, waterproofing, interconnection, and finishing based on soil testing report.
- Provide a pump sump at one corner for safe pump installation.

Note: Number of Reservoirs required for Runoff Water Collection System will be notified and ordered post analysis of project report by competent authority.

### G. Solar Pumping System

- Install one **3 HP Solar pumping system** with required Head and Discharge:
  - **Solar panel system with structures,**
  - **Hybrid controller** allowing dual operation (solar + electrical grid), and
  - **Lightning arrester** for system safety.

Note: Number of Solar Pumping System required for Runoff Water Collection System will be notified and ordered post analysis of project report by competent authority.

#### Specifications:

#### Pumping System

- **Capacity (Motor Rating):** 3 HP (2.2 kW).
- **Operating Voltage:** 220–240V AC (single-phase) or 415V AC (three-phase).
- **Rated Head:** > 15M (to be finalized by the Agency based on OHT height + pipeline friction losses).
- **Discharge Capacity:** Approx. >1,20,000 LPD (@ average solar irradiation, 6–7 hours per day, >15M head).
- **Pump Efficiency:** ≥ 40% at duty point.
- **Motor Efficiency:** ≥ 75%, with IP 55 protection class and F-class insulation.

#### Solar PV Panels

- Type: Polycrystalline / Monocrystalline PERC with minimum 19–20% efficiency.
- Capacity: >3 kWp (to match 3 HP motor requirement, considering derating).
- Voltage: As per Vmp of pump controller (generally 350–380 V DC).

## WEBEL TECHNOLOGY LIMITED

- Certifications: IEC 61215 / 61730 / 61701 (Salt Mist), MNRE approved.

### PV Array Mounting Structure:

- Material: Hot Dip Galvanized MS, minimum 80-micron zinc coating.
- Tilt Angle: As per site latitude ( $\approx 23^\circ$  for Purulia). Adjustable tilt preferred.
- Wind Load Resistance: Min. 150 km/h.

### Pump Controller (Hybrid VFD with MPPT)

- **Technology:** MPPT (Maximum Power Point Tracking) based Solar Pump Controller.
- **Hybrid Operation:** Dual input support (Solar + Grid/DG). Auto changeover enabled.
- **Protection Features:**
  - Dry run protection
  - Reverse polarity & surge protection.
  - Overload & short-circuit protection.
- **Efficiency:**  $\geq 95\%$ .
- **Display & Monitoring:** Digital LCD/LED display for voltage, current, power, head, discharge, operating hours.

### Power Backup & Grid Integration

- **Hybrid Operation Mode:** System can operate using **solar power during day** and **grid supply during low/no sunlight**.

### Balance of System (BOS)

- **Cabling:** UV-resistant, XLPE insulated copper cables (DC & AC sides) as per IS 694/IS 1554.
- **PV array earthing:** 2 Nos. GI earth electrodes.
- **Lightning Protection:** Lightning Arrester with spike, connected to separate earth pit.
- **Surge Protection:** SPD on DC and AC sides.

### Safety & Protections

- Reverse polarity, short circuit, and overcurrent protection.
- Earth fault detection.
- Automatic shutoff in case of low water or high tank level (float switch compatible).

## H. Water Treatment & Delivery

Delivery pipeline from pump outlet to existing **Overhead Tank (OHT)** shall pass through a **turbidity filter, activated carbon filter, and chlorine dosing unit** to ensure water quality.

- a. Turbidity Filter/ Multi Grade Filter Capacity: about 19000 LPH with MOC: FRP or PVC with Media quantity minimum 1000 kg of Sand and 100 kg Gravels. Size of pressure vessel should be approximately: 36 inch X 72 inch
- b. Activated Carbon Filter: Capacity of about 19000 LPH with MOC: FRP or PVC with minimum 320 kg Carbon. Size of Pressure vessel should be approximately: 36 inch X 72 inch
- c. Chlorine Dosing System of 1.5/3.0/6.0/10.0 LPH at 4 kg/sq.cm

Note1: All Interconnecting Pipeline shall be of UPVC

Note2: Treated water to be pumped into the existing 1.0 lakh litre storage tank, from where water will be lifted to the OHT through the existing system.

## I. Civil, Structural & Ancillary Works

- Complete construction and finishing of all civil structures including reservoir, filter foundations, chambers, and other related works.

## WEBEL TECHNOLOGY LIMITED

- Supply and installation of **support structures, clamps, fasteners, and anchoring** for gutters and pipelines.
- Ensure all works are executed in line with standard engineering practices, site safety norms, and durability requirements.
- Supply & installation of metal clamps, supports, MS Scaffolding arrangements for gutters & downtake pipes.
- Testing, commissioning, and as-built drawings and O&M Manual submission
- Ensuring 5 Point Safety of Workers on field

### J. Integrated Monitoring System

SITC of IoT Deployment including Design, Implementation & Maintenance with Centralized IoT Platform for the real time monitoring of Harvested water storage and other relevant data related to Rainwater Harvesting System.

It includes all associated activities of supply, installation, integration, training and go-live with culmination of data feed of the site at the centralized dashboard.

#### Networking for IoT Devices:

The cost of the network connectivity either via 4G enabled IoT Sim cards as per TRAI regulations including failsafe mechanism of fallback against multiple MSP to ensure real-time data availability and transferability is to be considered as scope of the bidder. The same scope includes such connectivity for 12 months from date of Go-live.

#### Dashboard:

1. Objectives: The main objectives of the Dashboard include:

- Enabling real-time monitoring of Rain Water Harvesting parameters. Providing data analytics and reporting functionalities.
- Ensuring data security and role-based access control for various user levels.

2. Functional Requirements of Dashboard

- User Authentication & Access Controls:
  - Implement SSO login functionality with role-based access for different user levels. The system should allow Role-Based views.
- Landing Page & Map Views
  - The landing page should feature a geotagged map displaying RWH Unit.
- Analytics Dashboard (Provide KPI-based analytics for various water system parameters, including but not limited to):
  - Water Quantity / Flow Parameters
    - **Rainfall measurement** (rain gauge sensor – intensity and duration)
    - **Reservoir water level** (ultrasonic or pressure sensors – to avoid overflow or dry tank conditions)
    - Total Rainwater Harvested
  - Water Quality Parameters (To ensure stored rainwater is safe for reuse (livestock))
    - Turbidity (NTU) – **clarity of water**
    - pH level – **acidity/alkalinity**
    - **Residual Chlorine**
    - **TDS (Water Hardness)**
  - System Health & Operation Parameters
    - **Pump status** (on/off, current, voltage, energy consumption)
    - **Solar Generation**

## WEBEL TECHNOLOGY LIMITED

- Alerts & Notifications
  - The system will generate alerts based on specific thresholds for parameters like pump operations, Low reserve water, pH levels and turbidity.
- Reporting & Download Features
  - Users should be able to download reports in PDF and Excel formats.
  - Scheme vulnerability reports and operational performance reports should be automatically generated and available on a monthly basis.
- Master Data Management
  - A master data screen will allow users to view all sensor details, including locations and status.
- Security & Data Privacy
  - Ensure secure login through role-based access control and adherence to data privacy standards.

The solution involves developing and managing a **cloud-hosted centralized IoT platform** to collect, process, and analyze telemetry data from field devices. The platform must support scalable architecture, standardized data formats, multiple IoT protocols, and seamless on boarding of devices.

The **centralized IoT platform** must ensure 24/7 availability, support decision-making, and generate alerts for water supply operations such as pump health, water levels, and treatment quality. It should include analytics, APIs, and integration with enterprise systems, supporting diverse data sources (CSV, Excel, NoSQL, RDBMS).

For **data visualization and reporting**, the system must offer intuitive, web-based tools with real-time insights, customizable dashboards, multi-state visual alarms, and advanced analysis features. It should enable ad-hoc displays, comparative event analysis, Gantt views, Excel integration, and touch-enabled interactions. Displays and reports must be shareable, extensible, and adaptable to multiple user groups.

- **Cloud-hosted IoT platform** for real-time telemetry, device management, data processing, and analytics.
- **Standardized architecture & data formats** across sensors, protocols (MQTT, AMQP, CoAP, HTTPs), and scalable for future expansion.
- **Seamless device onboarding** with self-service vendor registration and approval.
- **24/7 centralized decision support** with alerts on water levels, pump health, treatment plant performance, and water quality.
- **Data & analytics engine** supporting multiple data sources (CSV, Excel, NoSQL, RDBMS) and enterprise system integration.
- **Advanced visualization & reporting**: real-time dashboards, customizable KPIs, ad-hoc analysis, multi-state alarms, Excel add-in, event comparisons, and touch-enabled interfaces.
- **User-friendly, scalable, and shareable tools** ensuring operational intelligence, efficiency, and long-term monitoring.

### K. O&M Scope of Work

The selected agency shall provide comprehensive Operation & Maintenance (O&M) services for the installed Rainwater Harvesting, Storage, Treatment, Pumping, and Monitoring System, covering the following:

#### 1. Routine Checks

- Monthly operational checks of solar pumping system, water conveyance, treatment, and distribution.
- Monitoring of water inflow, storage levels, treatment units, and discharge.
- Management of chlorine dosing and water quality parameters as per livestock standards.

#### 2. Preventive Maintenance

- Quarterly inspection and cleaning of gutters, downpipes, filters, silt traps, drains, reservoirs, and sumps.

## WEBEL TECHNOLOGY LIMITED

- Scheduled servicing of pumps, motors, valves, flow meters, and solar PV modules (including cleaning of panels).
- Calibration and verification of IoT sensors (water level, turbidity, pH, flow, rainfall, etc.).
- Lubrication, tightening, and minor adjustments of moving/mechanical parts.

### 3. Corrective Maintenance (Labour-Only)

- Troubleshooting and rectification of operational faults in pumps, filters, pipelines, solar controller, and IoT system.
- Replacement of faulty spares/consumables shall be borne by the Purchaser (since O&M excludes supply).

### 4. Monitoring & Reporting

- Annual Subscription along with Sim Card & API
- 24/7 data capture via IoT platform and central dashboard.
- Monitoring of key KPIs: storage levels, pumping hours, water quality, rainfall received, and solar energy generated.
- Submission of **monthly O&M report** covering performance, breakdowns, rectifications, and water quality test results.
- Alerting project authority for any major fault or abnormality.

### 5. Safety & Compliance

- Ensuring 5-point worker safety compliance during all O&M activities.
- Maintaining site cleanliness, secure access, and environmental compliance.
- Coordination with statutory authorities if required.

### 6. Documentation & Handover

- Maintenance of logs/registers (operation hours, breakdowns, inspections, water quality checks).
- Annual submission of consolidated O&M performance report.
- Handover of updated documentation at the end of the O&M contract period

**WEBEL TECHNOLOGY LIMITED**  
**SECTION – C**

**ELIGIBILITY CRITERIA**

1. The bidder must be a company registered under Companies Act, 1956/2013 or Partnership or LLP or OPC or Proprietary Firm. Documentary (Certificate of incorporation/Relevant document) evidence to be submitted.
2. Bids may be submitted by a single entity or as a Joint Venture (JV).
3. A Joint Venture shall not consist of more than two partners, wherein partners can collaborate both on technical & financial ground to execute a project. JV Agreement (MoU) should be submitted as a proof.
4. The JV Agreement (MoU) shall clearly define the roles, responsibilities, and shareholding of each partner. Where one partner shall be designated as the Lead Partner, authorized to incur liabilities and receive instructions on behalf of the JV. JV Agreement (MoU) should be submitted as a proof.
5. The Lead Partner must hold at least 51% of the financial and technical responsibility of the contract. JV Agreement (MoU) should be submitted as a proof with clear indication of the share portion being highlighted for easy reference.
6. 2<sup>nd</sup> partner must hold 21% financial and technical responsibility to make their credentials count to meet the tender criteria. Proof should be same as desired under slno 5.
7. All partners of the JV shall be jointly and severally liable for the execution of the Contract. To be vouched by both the parties involved in JV.
8. The JV must submit:
  - A legally binding JV Agreement/Intent signed by all partners.
  - Power of Attorney authorizing the Lead Partner.
  - Details of financial, technical, and execution capacity of each partner.
9. No partner may withdraw during the contract period without prior approval of the Tendering Authority.
10. A partner of one JV shall not participate in another JV or individually in the same tender. Self-declaration to be submitted by both the parties in JV.
11. The bidder or any of the JV partner should have their presence in the "State" with own office along with WBGST. Valid proof should be in the form of GST certificate should be submitted along with the bid.
12. The bidder should have valid WBGST Registration Certificate & PAN. Bidder shall have to submit photocopy of the documents.
13. The bidder should have a total turnover of not less than Rs. 15.00 Cr. covering the last five financial years (considering FY 20-21,21-22,22-23, 23-24 & 24-25). Bidder shall have to submit Audited Balance Sheet / Audited Accounts / Auditor Certificate in support of their claim.
14. The bidder / JV partner shall have experience in the field of Water Management consultancy and been involved in designing and execution of Total Consultancy Services of >15 Lakhs in last 5 Yrs. Self-certified work order(s) to be submitted with customer contact for any verification in due course.
15. The bidder / JV partner shall have at least one B-Tech Engineer from the field of Agricultural / Civil Engineering. Certification in letterhead.
16. The bidder / JV partner shall have at least one Chartered Engineer. Valid certificate to be submitted to substantiate the submission.

## **WEBEL TECHNOLOGY LIMITED**

17. The Bidder / JV partner should have completed project of at least INR 1.0 Cr wherein the firm has executed Civil Work and or Solar Power Generating Station or works involving both for any Central Government / State Government / Urban Local Bodies/ PSUs in India. Bidder should submit reference order copy with completion certificate/payment certificate with all relevant details for the project to be provided.
18. The Bidder / JV partner should have executed IOT based remote monitoring system with online dashboard for any Central Government / State Government / Urban Local Bodies/ PSU in India. Bidder should submit reference order copy with completion certificate/payment certificate with all relevant details for the project to be provided.
19. Bidder & OEM should have a call centre (toll free or otherwise) in West Bengal. Details to be submitted in respective letter head.
20. The bidder shall submit Bid Form (Section – F) duly signed by the authorized signatory of the company as per the format enclosed. Deviation in format may not be accepted.
21. Bidder shall submit NIT Declaration (Section – Q) duly signed by the authorized signatory of the company as per the format. Deviation in format may not be accepted.
22. The Lead Bidder / JV Partner should have minimum ISO certification of ISO 9001:2015. Certificate to be submitted.
23. The bidder shall not have been blacklisted by any State/Central Government or PSU Organization or bilateral/multilateral funding agencies for breach of ethical conduct or fraudulent practices as on date of submission of the proposal (as per DIT guidance note issued on 26-Dec-2011). Declaration on bidder's letter head to be submitted.
24. The bidder should have a presence in the form of offices or engineers in West Bengal. This should be substantiated via proof of office or proof of permanent staff at West Bengal. Declaration from HR Head in company letter head should be submitted.
25. Intending bidder(s) must carry out site visit for pre-tender survey either on 09.10.2025 or 10.10.2025 (Between 11am to 3pm) and upload the declaration (Section – O) duly signed by the concerned Officer/Representative) during participation. Site Visit is mandatory for Bid Participation.
26. Intending Bidder(s) must attend Pre-Bid meeting along with site survey document. Attendance is mandatory for Bid Participation.

# WEBEL TECHNOLOGY LIMITED

## SECTION – D

### DATE AND TIME SCHEDULE

<b>Sl. No.</b>	<b>Particulars</b>	<b>Date &amp; Time</b>
1	Date of uploading of N.I.T. & other Documents (online) (Publishing Date)	25.09.2025
2	Documents download/sale start date (Online)	25.09.2025
3	Site Visit	09.10.2025 – 10.10.2025 Between 11:00 Hrs to 15:00
3	Last Date and time of sending the queries (Offline)	13.10.2025 at 15.00 hrs.
4	Pre-Bid Meeting at WTL Office (Off Line)	14.10.2025 at 12.00 hrs.
5	Corrigendum, if any will be published (On Line)	-
6	Bid Submission start date & time (On line)	18.10.2025 at 13.00 hrs.
7	Last Date & time of submission of Earnest Money Deposit & submission of remittance details	Before Uploading of Tender
8	Last Date & time of submission of Tender Fee & submission of remittance details	Before Uploading of Tender
9	Bid Submission closing date & time (On line)	29.10.2025 at 12.00 hrs.
10	Bid opening date & time for Technical Proposals (Online)	31.10.2025 at 12.00 hrs.
11	Date of uploading the final list of Technically Qualified Bidder (online) after disposal of appeals, if any	-
12	Date for opening of Financial Bid (Online)	-

# WEBEL TECHNOLOGY LIMITED

## SECTION – E

### INSTRUCTIONS TO BIDDER

#### 1. DEFINITIONS

In this document, the following terms shall have following respective meanings:

**“Agreement”** means the Agreement to be signed between the successful bidder and WTL including all attachments, appendices, all documents incorporated by reference thereto together with any subsequent modifications, the RFP, the bid offer, the acceptance and all related correspondences, clarifications, presentations.

**“Acceptance Test Document”** means a document, which defines procedures for testing the functioning of installed system. The document will be finalized with the contractor within 7 days of issuance of the Letter of Award.

**“Bidder”** means any firm offering the solution(s), service(s) and /or materials required in the RFP. The word Bidder when used in the pre award period shall be synonymous with Bidder, and when used after award of the Contract shall mean the successful Bidder.

**“Contract”** is used synonymously with Agreement.

**“Contract Price”** means the price to be paid to the Contractor for providing the Solution, in accordance with the payment terms.

**“Contractor”** means the Bidder whose bid to perform the Contract has been accepted by Tender Committee and is named as such in the Letter of Award.

**“Default Notice”** mean the written notice of Default of the Agreement issued by one Party to the other.

**“Installation”** means installation of supplied Hardware & Software.

**“Fraudulent Practice”** means a misrepresentation of facts in order to influence a procurement process or the execution of a Contract and includes collusive practice among Bidders (prior to or after Bid submission) designed to establish Bid prices at artificial noncompetitive levels and to deprive WTL and eventually Departments of Gov. of W. Bengal of the benefits of free and open competition.

**“GoI”** shall stand for the Government of India.

**“GoWB”** means Government of West Bengal.

**“Personnel”** means persons hired by the Bidder as employees and assigned to the performance of the Infrastructure Solution or any part thereof.

**“Similar Nature of Work”** means Design, Supply, Installation, Commissioning and Maintenance of Integrated Rainwater Harvesting System or having experience in the field of Water Management consultancy and been involved in designing and execution of Total Consultancy Services and wherein the firm has executed Civil Work and or Solar Power Generating Station or works involving both, along with IOT based remote monitoring system with online dashboard for any Central / Sate Govt.depts/CPSU/SPSU

**“Project”** means Design, Supply, Installation, Commissioning and Maintenance of Integrated Rainwater Harvesting System at Purulia Layer Farm, Gobindapur, Purulia, West Bengal of West Bengal.

**“Services”** means the work to be performed by the Bidder pursuant to this Contract, as described in the detailed Scope of Work.

**“Interest rate”** means “364 days Government of India (GoI) Treasury Bills” rate.

# WEBEL TECHNOLOGY LIMITED

"**Law**" shall mean any Act, notification, bye law, rules and regulations, directive, ordinance, order or instruction having the force of law enacted or issued by the Central Government and/or the Government of West Bengal or any other Government or regulatory authority or political subdivision of government agency.

"**LOI**" means issuing of Letter of Intent shall constitute the intention of the WTL to place the Purchase Order with the successful bidder.

"**Requirements**" shall mean and include schedules, details, description, statement of technical data, performance characteristics, standards (Indian as well as International) as applicable and specified in the Contract.

"**Service**" means provision of Contracted service viz., operation, maintenance and associated services for DEPLOYED SYSTEMS along with centralized dashboard as per Section A titled "Scope of Work".

"**Termination Notice**" means the written notice of termination of the Agreement issued by WTL.

"**WTL**" means Webel Technology Limited a Govt. of West Bengal undertaking.

## 2. **SITE VISIT**

Bidders are requested to visit site for pre-tender survey on 09.10.2025 or 10.10.2025 (Between 11am to 3pm) at Purulia Layer Farm, Gobindapur, Purulia, West Bengal of West Bengal Livestock Corporation Ltd.

Bidder has to send a pre-intimation on site visit via email about site visit by 08.10.2025 till 15:00 Hrs to [purchase@wtl.co.in](mailto:purchase@wtl.co.in).

Site Visit is mandatory for Bid Participation.

## 3. **PRE BID MEETING**

Pre Bid Meeting will be held on 14.10.2024 at 12.00 hrs. (Off-Line Meeting). Pre-Bid meeting will be organized at WTL. Only queries as per format (Section - M) reaching WTL by 13.10.2025 within 15.00 Hrs. will be taken for discussion. Queries will be sent to Purchase Department ([purchase@wtl.co.in](mailto:purchase@wtl.co.in)). The meeting is intended towards explanation by the intending bidder(s) with respect their submitted queries.

**Attendance (1 person per organization will be allowed) and it is mandatory for Bid Participation**

## 4. **COST OF BIDDING**

The bidder shall bear all costs associated with the preparation and submission of the bid and WTL will no case be responsible for those costs regardless of the conduct or outcome of the bidding process.

## 5. **BID DOCUMENT**

Bidder is expected to examine all instructions, forms, terms and requirement in the bid document. The invitation to bid together with all its attachment thereto shall be considered to be read, understood and accepted by the bidder unless deviations are specifically stated in the seriatim by the bidder. Failure to furnish all information required by the bid document or a bid not substantially responsive to the bid document in every respect may result of the bid.

## 6. **AMENDMENT OF BID DOCUMENT**

At any time prior to the deadline for submission of proposals, WTL reserves the right to add/modify/delete any portion of this document by issuance of a Corrigendum, which would be published on the website and will also be made available to the all the Bidder who have been issued the tender document. The Corrigendum shall be binding on all bidders and will form part of the bid documents.

## 7. **MODIFICATION AND WITHDRAWAL OF BIDS**

The bidder cannot modify or withdraw its bid after submission.

## 8. **LANGUAGE OF BID & CORRESPONDENCE**

The proposal will be prepared by the Bidder in English language only. All the documents relating to the proposal (including brochures) supplied by the firm should also be in English, and the correspondence between the Bidder & WTL will be in English language only. The correspondence by fax/E-mail must be subsequently confirmed by a duly signed formal copy.

# WEBEL TECHNOLOGY LIMITED

## 9. BIDDER'S SOLUTION

The bidders are requested to study the Bill of Material supplied with this document carefully. While working out the solution the bidder has to work with the broad minimum specification provided in the tender documents, conforming to the model, make and Part number (wherever provided). While submitting the bid the bidder has to detail out all components needed to complete the system BOM. The bidder is required quote for each item retaining all major components/sub system detailed and specified. As the contractor will be responsible for smooth functioning of the system, availability of spares during the tenure of the warranty period have to be take care by the contractor to maintain the guaranteed uptime.

## 10. EARNEST MONEY DEPOSIT (EMD) & TENDER FEE

The bidder shall furnish Online Receipt against payment of Tender Fees and Earnest Money Deposit.

## 11. REFUND OF EMD

EMD will be refunded to the unsuccessful bidders without interest by following guidelines of circular 3975-F(Y) dated 28/07/2016 on final selection of Successful Bidders.

## 12. FORFEITURE OF EMD

EMD made by Bidder may be forfeited under the following conditions: If

Bidder withdraws the proposal before the expiry of validity period.

During the evaluation process, if a Bidder indulges in any such activity as would jeopardize the process, the decision of WTL regarding forfeiture of EMD shall be final and shall not be called upon question under any circumstances.

If Bidder violates any of the provisions of the terms and conditions of the proposal. In the

case of a successful Bidder, if Bidder fails to:

- a) Accept the work order along with the terms and conditions.
- b) Furnish performance security.
- c) Violates any of the work conditions of this proposal or indulges in any such activities as would jeopardize the work.
- d) Submitting false/misleading information/declaration/documents/proof/etc.

The decision of WTL regarding forfeiture of EMD shall be final and shall not be called upon to question under any circumstances, besides, forfeiture of EMD even the Bidder will be deferred from participating in any job for a period of one year.

## 13. FORMS AND FORMATS

The various inputs for the Techno Commercial as Financial Bids are to be submitted in the format specified. The bidder shall use the form, wherever specified, to provide relevant information. If form does not provide space for any required information, space at the end of the form or additional sheets shall be used to convey the said information. For all other cases, the bidder shall design a form to hold the required information.

## 14. LACK OF INFORMATION TO BIDDER

The bidder shall be deemed to have carefully examined the Bid document to his entire satisfaction. Any lack of information shall not relieve the bidder of his responsibility to fulfill his obligation under the bid. If bidder has any queries relating to bid document, then he can send the queries before the Pre Bid Meeting.

## 15. CONTRACT EXECUTION

On receipt of the Letter of Award the contractor should submit a Performance Bank Guarantee (PBG) equivalent to 10% of the total contract value within three weeks from the date of receipt of Letter of Award/Order. The PBG should be valid for six month more than the warranty period. All delivery of the material will have to be completed within 30 days from the date of acceptance of contract and the contractor has to ensure all activities leading to the commissioning of the contract to be completed within 90 days from the date of award. Subsequent to the award of contract, the contractor will have to arrange for the requisite material as per BOM.

## **WEBEL TECHNOLOGY LIMITED**

### **16. TIME SCHEDULE FOR DELIVERY & INSTALLATION**

Sl No	Activity	Time Line (In Days)
1	Date of Issuance of LOA to the bidder	T
2	Team Mobilization for Survey / Execution	T+7
3	Completion of Civil Construction	T+120
4	Installation & Commission of Water Conveyance system	T+135
5	Data Integration with Central Dashboard	T+145
6	Obtaining go-live / Completion Certificate from site in- charge	T+150

\* From the date of awarding the LOA to the Bidder

\* The Selected Bidder has to provide all the deliverables strictly as per the schedule. The Service Recipient body will grant approvals to all the deliverables through the valid challans & OEM certification on serial no(s) The time consumed in granting approvals or any delay from the client side, is excluded from above and the Selected Bidder will not be accountable for the same.

### **17. LIQUIDATED DAMAGE**

The job includes the supply and installation of materials mentioned in the tender document. In the event of failure to meet the job completion in stipulated date/time liquidated damage may be imposed on the contractor for sum not less than 0.5% of the contract value for undelivered/installed items, each week or part thereof, subject to a ceiling of 3% of the total contract value (including all taxes & duties and other charges). In the event of LD exceeds 3% of the order value, WTL reserves the right to terminate the contract and WTL will get the job completed by any other competent party. The difference of cost incurred by WTL will be recovered from the contractor and PBG will be invoked.

### **18. LIABILITY**

In case of a default on bidder's part or other liability, WTL shall be entitled to recover damages from the Contractor. In each such instance, regardless of the basis on which WTL is entitled to claim damages from the Contractor (including fundamental breach, negligence, misrepresentation, or other contract or tort claim), Contractor shall be liable for no more than:

- Payment referred to in the Patents and Copyrights clause.
- Liability for bodily injury (including death) or damage to real property and tangible personal property limited to that cause by the Contractor's negligence.
- As to any other actual damage arising in any situation involving nonperformance by Contractor pursuant to or in any way related to the subject of this Agreement, the charge paid by WTL for the individual product or Service that is the subject of the Claim. However, the contractor shall not be liable for
- For any indirect, consequential loss or damage, lost profits, third party loss or damage to property or loss of or damage to data.

For any direct loss or damage that exceeds the total payment for Contract Price made or expected to be made to the Contractor hereunder.

### **19. PATENTS & COPYRIGHT**

If a third party claims that a product delivered by the Contractor to WTL infringes that party's patent or copyright, the Contractor shall defend WTL against that claim at Contractor's expense and pay all costs, damages, and attorney's fees that a court finally awards or that are included in a settlement approved by the Contractor, provided that WTL.

- Promptly notifies Contractor in writing of the claim
- Allows Contractor to control and co-operate with Contractor in the defense and any related settlement negotiations.

Remedies: If such a claim is made or appears likely to be made, WTL would permit Contractor to enable WTL to continue to use the product, or to modify it, or replace it with one that is at least functionally equivalent. If Contractor determines that none of these alternatives is reasonably available, WTL agrees to return the product to Contractor on Contractor's written request. Contractor will then give WTL a credit equal to for a machine. WTL's net book value (provided WTL has followed generally accepted accounting principles for a generally available software product produced by Contractor (Program) the amount paid by WTL or 12 months charges (whichever is lesser) and for materials the amount paid by WTL for the materials. These will be Contractor's entire obligation regarding any claim of infringement.

## **WEBEL TECHNOLOGY LIMITED**

### **20. SUSPENSION OF WORK**

WTL shall have the power at any time and from time to time by notice to the Contractor to delay or suspend the progress of the work or any part of the work due to any other adequate reasons and on receipt of such notice the contractor shall forthwith suspend further progress of the work until further notice from WTL. The Contractor shall recommence work immediately after receiving a notice to do so from WTL. The whole or any part of the time lost for such delay or suspension shall, if WTL in its absolute discretion thinks fit, but not otherwise, be added to the time allowed for completion.

### **21. TERMS OF PAYMENT**

Payment terms will be on back-to-back basis, i.e., payment will be made only on receipt of payment from relevant customer.

### **22. GOVERNING LAWS**

This contract should be governed by and interpreted by Arbitration clause in accordance with Laws in force in India. The courts at Kolkata shall have exclusive jurisdiction in all matters arising under the contract. The selected vendor shall keep himself fully informed of all current national, state and municipal law and ordinances. The selected vendor shall at their own expense, obtain all necessary permits and license and pay all fees and taxes required by law. These will be selected vendor's entire obligation regarding any claim of infringement. The selected vendor hereto agrees that it shall comply with all applicable union, state and local laws, ordinances, regulations and codes in performing its obligations hereunder, including the procurement of licenses, permits certificates and payment of taxes where required. The selected vendor shall establish and maintain all proper records (particularly, but without limitation, accounting records) required by any law, code/practice of corporate policy applicable to it from time to time including records and returns as applicable under labor legislation.

### **23. CORRUPT OR FRAUDULENT PRACTICES**

The Tender Committee requires that the bidders under this Tender observe the highest standards of ethics during the procurement and execution of such contracts. For this purpose, the definition of corrupt and fraudulent practices will follow the provisions of the relevant laws in force. The Tender Committee will reject a proposal for award if it detects that the bidder has engaged in corrupt or fraudulent practices in competing for the contract in question. The Tender Committee will declare a firm ineligible, either indefinitely or for a stated period of time, if it at any time determines that the firm has engaged in corrupt and fraudulent practices in competing for, or in executing, a contract.

### **24. BINDING CLAUSE**

All decisions taken by the Tender Committee regarding the processing of this tender and award of contract shall be final and binding on all parties concerned. The Tender Committee reserves the right:

- To vary, modify, revise, amend or change any of the terms and conditions mentioned above and,
- To reject any or all the Tender/s without assigning any reason whatsoever thereof or to annul the bidding process and reject all bids at any time prior to award of contract, without thereby incurring any liability to the affected bidder(s) or any obligation to inform the affected bidder(s) of the grounds for such decision.

### **25. WORKMEN'S COMPENSATION**

In every case in which by virtue of the provision of the workmen's compensation Act 1923 or any other relevant acts and rules, compensation to a workman employed by the contractor, is payable, then this should be done by the Contractor. If WTL is obliged to make any compensation under the said rules and acts, then the amount shall be recovered without prejudice, from the bills and due of the Contractor. WTL shall not be bound to contest any claim made against the Contractor in respect of workmen's compensation.

### **26. CONTRACTOR'S EMPLOYEES**

The Contractor shall comply with the provision of all labour legislation including the requirement of the payment of Wage Act 1936 and the rules framed there under and modifications thereof in respect of men employed by him in carrying out the contract. The Contractor must ensure that he complies with PF, ESI regulation for all his deployed employees. The Contractor shall see that all authorized Sub Contractors under him similarly complied with the above requirement.

## **WEBEL TECHNOLOGY LIMITED**

### **27. SAFETY MEASURES**

The Contractor shall in the course of execution of the work take all necessary precaution for the protection of all persons and property. The Contractor shall take adequate measures to protect the work and prevent accident during the work. In the event of any accident to any person or persons or damage or injury of any description to any person or property due to failure on the part of the contractor in taking proper precautionary measures the contractor shall be responsible for and must make good the loss the damage at his own cost to the satisfaction of the department and employees of the department shall be indemnified from all claims or liabilities arising there from or any expenses incurred on account thereof.

### **28. EQUIPMENT**

All tools & tackles necessary for the work shall have to be procured by the contractor unless otherwise specified elsewhere in these tender documents. The equipment used by the contractor for a particular work must be appropriate for the type of work. The contractor shall maintain the equipment used on the work properly so that they are in good working condition. In no case shall the contractor use defective or imperfect equipment in the work. The contractor shall arrange to replace or repair all defective equipment so that the progress of the work is not hampered. No defective equipment should be left at the site of work and the department shall not be responsible for any loss or damage to any of these equipments during the course of the execution of the work.

### **29. SUB-CONTRACT**

The purchaser (WTL) does not recognize the existence of Sub-Contractors. The Contractor's responsibility is not transferable. No consortium partner is allowed.

### **30. TERMINATION FOR DEFAULT**

WTL may without prejudice to any other remedy or right of claim for breach of contract by giving not less than 30 days written notice of default sent to the contractor, terminate the order in whole or in part. If the contractor materially fails to render any or all the services within the time period specified in the contract or any extension thereof granted by WTL in writing and fails to remedy its failure within a period of thirty days after receipt of default notice from WTL. If the project (delivery, commissioning as well as warranty maintenance support is not carried out according to specification due to deficiency in service as per terms of the contract. In such case WTL will invoke the amount held back from the contractor as PBG.

### **31. BANKRUPTCY**

If the contractor becomes bankrupt or have a receiving order made against him or compound with his creditors or being a corporation commence to be wound up, not being a voluntary winding up for the purpose only or amalgamation or reconstruction, or carry on their business under a receiver for the benefit of their creditors or any of them, WTL shall be at liberty to terminate the engagement forthwith without any notice in writing to the contractor or to the liquidator or receiver or to any person in whom the contractor may become vested and without any compensation to give such liquidator or receiver or other person the option of carrying out the engagement subject to their providing a guarantee for the due and faithful performance of the engagement up to an amount to be determined by WTL.

### **32. FORCE MAJEURE**

It is hereby defined as any cause, which is beyond the control of the Contractor or WTL as the case may be, which such party could not foresee or with a reasonable amount of diligence could not have foreseen and which substantially affect the performance of the contract, such as

- War, Hostilities or warlike operations (whether a state of war be declared or not), invasion, act of foreign enemy and civil war.
- Rebellion, revolution, insurrection, mutiny, usurpation of civil or military, government, conspiracy, riot, civil commotion and terrorist area.
- Confiscation, nationalization, mobilization, commandeering or requisition by or under the order of any government or de facto authority or ruler, or any other act or failure to act of any local state or national government authority.
- Strike, sabotage, lockout, embargo, import restriction, port congestion, lack of usual means of public **transportation** and communication, industrial dispute, shipwreck, shortage of power supply epidemics, quarantine and plague.
- Earthquake, landslide, volcanic activity, fire flood or inundation, tidal wave, typhoon or cyclone, hurricane, nuclear and pressure waves or other natural or physical disaster.

If either party is prevented, hindered or delayed from or in performing any of its obligations under the

## **WEBEL TECHNOLOGY LIMITED**

Contract by an event of Force Majeure, then it shall notify the other in writing of the occurrence of such event and the circumstances of the event of Force Majeure within fourteen days after the occurrence of such event. The party who has given such notice shall be excused from the performance or punctual performance of its obligations under the Contract for so long as the relevant event of Force Majeure continues and to the extent that such party's performance is prevented, hindered or delayed.

The party or parties affected by the event of Force Majeure shall use reasonable efforts to mitigate the effect of the event of Force Majeure upto its or their performance of the Contract and to fulfill its or their obligation under the Contract but without prejudice to either party's right to terminate the Contract.

No delay or nonperformance by either party to this Contract caused by the occurrence of any event of Force Majeure shall.

- Constitute a default or breach of the contract.
- Give rise to any claim fro damages or additional cost or expense occurred by the delay or nonperformance. If, and to the extent, that such delay or nonperformance is caused by the occurrence of an event of Force Majeure.

### **33. INSURANCE COVERAGE**

Appropriate insurance to cover all solution components for the transit period and until the time of its acceptance at the respective site is to be taken by the contractor. As the contractor will carry the risk for the material in his books during transit, the contractor should arrange insurance for the total system as period from the dispatch till Acceptance Test is successfully achieved. Further the contractor is to take all required insurance coverage in respect of all its personnel who shall be working on this engagement.

### **34. WARRANTY**

The bidder will provide warranty support of the solution(s) for 12 months from the date of commissioning. The Solution provider would be responsible for the up keepment and maintenance of the total solution under the scope of work during the entire warranty period, i.e., 12 months from the date of commissioning of the system.

### **35. WARRANTY SUPPORT**

The total system will be warranted against all defects from the date of commissioning of the system whole or part.

### **36. PERFORMANCE BANK GUARANTEE (PBG)**

As a guarantee for timely delivery, installation and commissioning of equipment as well as performance of on-site warranty support, as mentioned in Bill of Material, from the date of final acceptance of systems and pertaining to proper running of the systems, the bidder will have to submit 10% of the base contract value as security in the form of Performance Bank Guarantee from any nationalized bank as per format enclosed (Section - P).

### **37. SI/BIDDER/CONTRACTOR'S RESPONSIBILITIES**

Refer Section - A

### **38. NO WAIVER OF RIGHTS**

Neither the inspection by WTL or any of their agents nor any order by WTL for payment of money or any payment for or acceptance of the whole or any part of the works by WTL, nor any extension of time, nor any possession taken by WTL shall operate as a waiver of any provision of the contract or of any power reserved to WTL, or any right to damages here in provided, nor shall any waiver of any breach in the contract be held to be a waiver of any other subsequent breach.

### **39. ENFORCEMENT OF TERMS**

The failure of either party to enforce at any time any of the provision of this contract or any rights in respect thereto or to exercise any option here in provided shall in no way be construed to be a waiver to such provisions, rights or options or in any way to affect the validity of the contract. The exercise by either party of any of its rights herein shall not preclude or prejudice either party from exercising the same or any other right it may have hereunder.

### **40. PERIOD OF VALIDITY OF OFFER**

For the purpose of placing the order, the proposals shall remain valid till 180 days. During the period of validity of proposals, the rates quoted shall not change. In exceptional circumstances, WTL may ask for extension of the period of validity and such a request shall be binding on Bidders. WTL's request and the

## **WEBEL TECHNOLOGY LIMITED**

response to such a request by various Bidders shall be in writing. A Bidder agreeing to such an extension will not be permitted to increase its rates.

### **41. TAXES & DUTIES**

- The prices shall be inclusive of all taxes & levies including GST and other statutory duties as applicable. Rate of taxes should be indicated separately in the Price Bid.
- Contract Price specified in Price Bid should be based on the taxes & duties and charges prevailing at the date one day prior to the last date of Bid submission.
- Statutory deduction, wherever applicable, shall be made from invoice as per government rules. Necessary certificate will be issued for such deductions.
- Bidder submitting a bid shall produce valid statutory documents / certificates with respect to GST, Income Tax, ROC, Prof. Tax, Trade License, etc. All such documents / certificates shall remain valid on the last date of tender submission.
- GST component of the invoice of the bidder may be kept on hold in case there is any mismatch / irregularity in GST return filing on the part of the bidder.

### **42. DISCREPANCIES IN BID**

- Discrepancy between description in words and figures, the rate which corresponds to the words quoted by the bidder shall be taken as correct.
- Discrepancy in the amount quoted by the bidder due to calculation mistake of the unit rate then the unit rate shall be regarded as firm.
- Discrepancy in totaling or carry forward in the amount quoted by the bidder shall be corrected.

### **43. BID DUE DATE**

The tender shall be submitted not later than the due date and time specified in the Important Dates Sheet. WTL may as its discretion on giving reasonable notice by fax, or any other written communication to all prospective bidders who have been issued the bid documents, extend the bid due date, in which case all rights and obligations of the WTL and the bidders, previously subject to the bid due date, shall thereafter be subject to the new bid due date as extended.

### **44. LATE BID**

Any proposal received after the deadline for submission of proposals may not be accepted.

### **45. OPENING OF BID BY WTL**

Bids shall be opened and downloaded electronically through operation of the process in the e-Tender portal in presence of Tender Committee. Bidders interested to remain present during electronic bid opening may attend the bid opening session at WTL premises at scheduled date & time.

### **46. CONTACTING WTL**

Bidder shall not approach WTL officers beyond office hours and/or outside WTL office premises from the time of the Bid opening to the time of finalization of successful bidder. Any effort by bidder to influence WTL office in the decision on Bid evaluation, Bid comparison or finalization may result in rejection of the Bidder's offer. If the bidder wishes to bring additional information to the notice of WTL, it should be in writing.

### **47. WTL'S RIGHT TO REJECT ANY OR ALL BIDS**

WTL reserves the right to reject any bid and to annul the bidding process and reject all bids at any time prior to award of Contract, without thereby incurring any liability to the affected bidder(s) or any obligation to inform the affected bidder(s) of the grounds for such decision.

### **48. BID CURRENCIES**

Prices shall be quoted in Indian Rupees, inclusive of all prevailing taxes, levies, duties, cess etc.

### **49. PRICE**

- Price should be quoted in the BOQ format only. No deviation is acceptable.
- Price quoted should be firm, inclusive of packing, forwarding, insurance and freight charges.
- Percentage/specified amount of taxes & duties should be clearly mentioned otherwise WTL reserves the right to reject such vague offer.
- Price to be quoted inclusive of supply, installation & commissioning charges.

# WEBEL TECHNOLOGY LIMITED

## 50. CANVASSING

Canvassing or support in any form for the acceptance of any tender is strictly prohibited. Any bidder doing so will render him liable to penalties, which may include removal of this name from the register of approved Contractors.

## 51. NON-TRANSFERABILITY OF TENDER

This tender document is not transferable.

## 52. FORMATS AND SIGNING OF BID

The original and all copies of the proposals shall be neatly typed and shall be signed by an authorized signatory(ies) on behalf of the Bidder. The authorization shall be provided by written Power of Attorney accompanying the proposal. All pages of the proposal, except for un-amended printed literature, shall be initialed by the person or persons signing the proposal. The proposal shall contain no interlineations, erase or overwriting. In order to correct errors made by the Bidder, all corrections shall be done & initialed with date by the authorized signatory after striking out the original words/figures completely.

## 53. WITHDRAWAL OF BID

Bid cannot be withdrawn during the interval between their submission and expiry of Bid's validity period. Fresh Bid may be called from eligible bidders for any additional item(s) of work not mentioned herein, if so required.

## 54. INTERPRETATION OF DOCUMENTS

If any bidder should find discrepancies or omission in the specifications or other tender documents, or if he should be in doubt as to the true meaning of any part thereof, he shall make a written request to the tender inviting authority for correction/clarification or interpretation or can put in a separate sheet along with his technical bid document.

## 55. SPLITTING OF THE CONTRACT AND CURTAILMENT OF WORK

WTL reserves the right to split up and distribute the work among the successful technically qualified bidders and to curtail any item of work in the schedule partly or fully based on scheme requirement. As it is a time constrained process, the work may be distributed as mentioned above at L1 rate arrived through the process.

## 56. PREPARATION OF TENDER

Tender shall be submitted in accordance with the following instructions:

- a) Tenders shall be submitted in the prescribed forms. Digital signatures shall be used. Where there is conflict between the words and the figures, the words shall govern.
- b) All notations must be in ink or type written. No erasing or overwriting will be permitted. Mistakes may be crossed out and corrections typed or written with ink adjacent thereto and must be initialed in ink by the person or persons signing the tender.
- c) Tenders shall not contain any recapitulation of the work to be done. Alternative proposals will not be considered unless called for. No written, oral, telegraphic or telephonic proposals for modifications will be acceptable.
- d) Tenders shall be uploaded as notified on or before the date and time set for the opening of tenders in the Notice Inviting Tenders.
- e) Tenders subject to any conditions or stipulations imposed by the bidder are liable to be rejected.
- f) Each and every page of the tender document must be signed with company seal by the bidder.

## 57. CLARIFICATION OF BIDS

During evaluation of the bids, the Customer/Tender Committee, at its discretion may ask the bidder for clarification of its bid. The request for the clarification and the response shall be in writing (fax/email) and no change in the substance of the bid shall seek offered or permitted.

## 58. COMPLIANCE WITH LAW

The contractor hereto agrees that it shall comply with all applicable union, state and local laws, ordinances, regulations and codes in performing its obligations hereunder, including the procurement of

## **WEBEL TECHNOLOGY LIMITED**

licenses, permits certificates and payment of taxes where required.

The contractor shall establish and maintain all proper records (particularly, but without limitation, accounting records) required by any law, code/practice of corporate policy applicable to it from time to time including records and returns as applicable under labor legislation.

### **59. ERASURES OR ALTERNATIONS**

The offers with overwriting and erasures may make the tender liable for rejection if each of such overwriting/erasures/manuscript ions is not only signed by the authorized signatory of the bidder. There should be no hand-written material, corrections or alterations in the offer. Technical details must be completely filled up. Correct technical information of the product being offered must be filled in. Filling up of the information using terms such as "OK", "accepted", "noted", "as given in brochure/manual" is not acceptable. The Customer may treat offers not adhering to these guidelines as unacceptable. The Customer may, at its discretion, waive any minor non-conformity or any minor irregularity in the offer. This shall be binding on all bidders and the Tender Committee reserves the right for such waivers.

### **60. FINAL INSPECTION**

Final inspection may be carried by the authorized representative from WTL. Each site dispatch should have OEM's certification related to slno(s) of the sensory items enclosed.

### **61. PRE-DISPATCH INSTRUCTION**

All materials / equipment's supplied against the purchase order may be subjected to Inspection, check and /or test by the authorized representative from WTL.

### **62. SITE INSPECTION**

Successful qualified Bidder(s) who accepts to work at the accepted rate through the process may inspect (at their own cost) the sites allocated to them, under necessary permission from WTL in writing. WTL will need at least four days to organize such permission.

### **63. QUALITY CONTROL**

- The contractor is obliged to work closely with WTL act within its authority and abide by directive issued by them on implementation activities.
- The contractor will abide by the safety measures and free WTL from all demands or responsibilities arising from accident/loss of life, the cause of which is due to their negligence. The bidder will pay all indemnities arising from such incidents and will not hold WTL responsible.
- The contractor will treat as confidential all data and information about the system, obtained in the execution of its responsibilities in strict confidence and will not reveal such information to any party without the prior written approval of WTL.
- WTL reserves the right to inspect all phases of contractor's operation to ensure conformity to the specifications. WTL shall have engineers, inspectors or other duly authorized representatives made known to the contractor, present during the progress of the work and such representatives shall have free access to the work at all times. The presence or absence of representatives of WTL does not relieve the contractor of the responsibility for quality control in all phases.
- The Court of Kolkata only will have the jurisdiction to deal with and decide any legal matters or dispute whatsoever arising out of the contract.

### **64. SERVICE LEVEL SUPPORT – MATRIX**

#### **Purpose**

The purpose of this Service Level Agreement (hereinafter referred to as SLA) is to clarify define the levels of service which shall be provided by the implementation Agency to the Client for duration of this project.

The benefits of these SLAs are to:

1. Trigger a process that applies the Client and the IA's management attention to some aspect of performance when that as pact drops below an agreed upon threshold, or target.
2. Makes explicit the expectations that the Client has for performance
3. Helps the Client control the levels and performance of IA's service

# WEBEL TECHNOLOGY LIMITED

This Service Level Agreement is between the IA and the Client. For purposes of this Service Level Agreement, the definitions and terms as specified in the contract along with the following terms shall have the meanings set forth below:

1. "Availability" shall mean the time for which the services and facilities offered by the Client are available for conducting operations from the Service Recipient Body's Property Tax Module.
2. Days: All working and Non-working days (365 days in a Calendar year)
3. 24\*7 means three shifts of 8 hours every day. This is applicable for all seven days of the week without any non-working days.
4. Non-working days: Saturday, Sunday and Public Holidays declared by the Management Categorization

The SLA has been logically segregated in the following categories:

1. Implementation phase
2. System Availability
3. System Performance
4. Incident Management

### SLA during implementation:

These SLAs shall be used to evaluate the timelines for completion of deliverables. These SLAs will be applicable for commissioning of the project (implementation of the complete project as per scope of the work defined in this RFP document). For delay of every month in completion & submission of the deliverable mentioned in the proposal, the System Integrator would be charged with penalty of 0.5% per month on balance work with maximum of 10% of total value of accepted.

### During O&M period, following SLA will be followed:

Sr. No.	Service Descriptio	Measurement parameter	Target	Penalty
1	Attending problem reported for the instrument / equipment supplied by Agency	Call Response Time	<= 3 Working Days	NA
			> 3 Working days	Penalty of Rs. 500 per day from 4 <sup>th</sup> Working day onwards till problem is not attended by the Agency
2	Repair / Replacement of Failure instrument by Agency	Downtime of an equipment	<= 14 Working Days	NA
			> 14 Working days	Penalty of Rs. 750 per day from 15 <sup>th</sup> Working day onwards till problem is resolved.

Note:

1. Days mean working days as per State Government.
2. The problem will be attended and support will be provided by the Agency support person through telephone / email / on-site visit.

### 65. GENERAL TERMS

- a) All the pages of the bid document including documents submitted therein must be duly signed and stamped failing which the offer shall be liable to be rejected.
- b) All the documents to be submitted by the bidder along with their offer should be duly authenticated by the person signing the offer and if at any point of time during procurement process or subsequently it is detected that documents submitted are forged/tampered/manipulated in any way, the total responsibility lies with the bidder and WTL reserves the full right to take action as may be deemed fit including rejection of the offer and such case is to be kept recorded for any future dealing with them.
- c) No Technical/Commercial clarification will be entertained after opening of the tender.
- d) Overwriting and erasures may make the tender liable for rejection if each of such

## **WEBEL TECHNOLOGY LIMITED**

overwriting/erasures/manuscription is not only signed by the authorized signatory of the bidder. All overwriting should be separately written and signed by the authorized signatory of the bidder.

- e) Quantity mentioned in the tender document is indicative only and orders shall be placed subject to actual requirement. WTL reserve the right to increase or decrease the quantity specified in the tender.
- f) WTL reserve the right to reject or accept or withdraw the tender in full or part as the case may be without assigning the reasons thereof. No dispute of any kind can be raised the right of buyer in any court of law or elsewhere.
- g) WTL reserve the right to ask for clarification in the bid documents submitted by the bidder. Documents may be taken if decided by the committee.
- h) No dispute by the bidders in regard to Technical/Commercial points will be entertained by WTL and decision taken by the Tender Committee will be final.
- i) Discrepancy in the amount quoted by the bidder due to calculation mistake, the unit rate shall be regarded as firm and the totaling or carry in the amount quoted by the bidder shall be corrected accordingly.
- j) The price offers shall remain firm within the currency of contract and no escalation of price will be allowed.
- k) The acceptance of the tender will rest with the accepting authority who is not bound to accept the lowest or any tender and reserves the right to reject in part or in full any or all tender(s) received and to split up the work among participants without assigning any reason thereof.
- l) The Customer/WTL at its discretion may extend the deadline for the submission of Bids.
- m) The Court of Kolkata only will have the jurisdiction to deal with and decide any legal matters or dispute whatsoever arising out of the contract.

# **WEBEL TECHNOLOGY LIMITED**

## **SECTION – F**

### **BID FORM**

(Bidders are requested to furnish the Bid Form in the Format given in this section, filling the entire Blank and to be submitted on Letter Head in original)

To

**Webel Technology Limited**

**Plot – 5, Block – BP,**

**Sector - V,**

**Salt Lake City,**

**Kolkata – 700091.**

**Sub: Design, Supply, Installation, Commissioning and Maintenance of Integrated Rainwater Harvesting System at Purulia Layer Farm, Gobindapur, Purulia, West Bengal of West Bengal.**

Dear Sir,

1. We the undersigned bidder/(s), having read and examined in details the specifications and other documents of the subject tender no. WTL/ARD/RWH/25-26/030 dated 25.09.2025, do hereby propose to execute the job as per specification as set forth in your Bid documents.
2. The prices of all items stated in the bid are firm during the entire period of job irrespective of date of completion and not subject to any price adjusted as per in line with the bidding documents. All prices and other terms & conditions of this proposal are valid for a period of 180 (one hundred eighty) days from the date of opening of bid. We further declare that prices stated in our proposal are in accordance with your bidding.
3. We confirm that our bid prices include all other taxes and duties and levies applicable on bought out components, materials, equipments and other items and confirm that any such taxes, duties and levies additionally payable shall be to our account.
4. Earnest Money Deposit & Tender fee: We have transferred EMD & Tender Fee amount online through e-Tender portal.
5. We declare that items shall be executed strictly in accordance with the specifications and documents irrespective of whatever has been stated to the contrary anywhere else in our proposal. Further, we agree that additional conditions, deviations, if any, found in the proposal documents other than those stated in our deviation schedule, save that pertaining to any rebates offered shall not be given effect to.

**WEBEL TECHNOLOGY LIMITED**

- 6. If this proposal is accepted by you, we agree to provide services and complete the entire work, in accordance with schedule indicated in the proposal. We fully understand that the work completion schedule stipulated in the proposal is the essence of the job, if awarded.
- 7. We further agree that if our proposal is accepted, we shall provide a Performance Bank Guarantee of the value equivalent to ten percent (10%) of the basic Order value as stipulated in Financial Bid (BOQ).
- 8. We agree that WTL reserves the right to accept in full/part or reject any or all the bids received or split order within successful bidders without any explanation to bidders and his decision on the subject will be final and binding on Bidder.

Dated, this .....day of .....2025

Thanking you, we remain,

Yours faithfully

.....  
Signature

.....  
Name in full

.....  
Designation

**Signature & Authorized Verified by**

.....  
Signature

.....  
Name in full

.....  
Designation

.....  
Company Stamp

# WEBEL TECHNOLOGY LIMITED

## SECTION – G

### TECHNO COMMERCIAL EVALUATION & AWARDING OF CONTRACT

#### 1. EVALUATION PROCEDURE

- The Eligibility Criteria (Section - C) will be evaluated by Tender Committee and those qualify will be considered for further evaluation.
- The Tender Committee shall verify the Technical Specification (Technical and Certification Compliance, Section – X) Deviation in specification shall not be allowed. Bidder qualified in Technical Specification shall be considered for further evaluation.
- The Tender Committee would evaluate the Techno Commercial Evaluation. In order to facilitate the evaluation, the marking scheme presented is an indication of the relative importance of the evaluation. Bidders securing a minimum of 70% marks in the Techno Commercial Evaluation for qualifying technical evaluation.
- Bidders after qualifying in Techno Commercial Evaluation will only be considers for Financial Bid Evaluation.

#### 2. EVALUATION CRITERIA

##### **Techno Commercial Evaluation**

The evaluation methodology would take into consideration both the Techno Commercial responsiveness as well as the financial response. During the evaluation process, the evaluation committee will assign each desirable/preferred feature a whole number score for the Techno Commercial Bid as defined in the table below

Sr.	Header	Description	Points	Evaluation Process	Supporting Docs
<b>A</b>	<b>Water Management Expertise</b>		<b>20</b>	<b>Capabilities of any JV Partners will be Considered</b>	
A1	Company Credential	Years of Experience	10	Executed Total Consultancy Services of >15 Lakhs in last 5 Yrs >15 to <= 25 Lakhs - 4 >25 to <=50 Lakhs - 8 >50 Lakhs - 10	1. ITR / Audited Balance Sheet 2. CA Certificate
		Last 5 Years Turnover			
A2	On roll Engineers	B-Tech Engineer in Agricultural / Civil Engineering	5	B.Tech Engineer's Certificate and proof of association with the Firm >5 yrs & <=10 Yrs - 3 >10 Yrs - 5	1. B-Tech Certificate 2. Proof of association with Company
		Chartered Engineer	5	Chartered Engineer's Certificate and proof of association with the Firm >5 yrs & <=10 Yrs - 3 >10 Yrs - 5	1. CE Certificate 2. Proof of association with Company
<b>B</b>	<b>Other Technical Expertise</b>		<b>15</b>	<b>Capabilities of any JV Partners will be Considered</b>	
B1	Civil / Solar Projects Expertise	Work Orders/CC/Payment Statement	10	Executed overall Project in last 5 Yrs No Project – 0 <1 Cr. - 2 >1 Cr. - 5 For Solar Segment No Project – 0 < 100 KWp - 2 > 100 KWp - 5	WO / CC

## WEBEL TECHNOLOGY LIMITED

B2	IOT Projects Expertise	Work Orders/CC/Payment Statement	5	Executed at least 5 IOT Projects in last 5 Yrs	WO / CC
<b>C</b>	<b>Financial Capabilities</b>		<b>15</b>	<b>Only Lead Bidder's Credentials will be Considered</b>	
C1	Combined Turnover	Audited Balance Sheet	10	Cumulative Turnover in last 5 Yrs >=15 & < 50 Cr. - 8 >50 Cr. - 10	Audited Balance Sheet
C2	Positive Net worth	CA Certificate of Positive Net worth	5	CA Certificate	
<b>D</b>	<b>Compliances &amp; Local Presence</b>		<b>10</b>	<b>Only Lead Bidder's Credentials will be Considered</b>	
D1	Certificates	PF, ESIC, GST, ISO	4	1 points for each compliance	Certificates
D2	Electrical Contractor	Lead Bidder should have office in West Bengal	2	Trade License	Certificates
D3	Electrical Contractor	Lead Bidder should have Electrical contractor License	4	Electrical contractor License	Certificates
<b>E</b>	<b>Presentation on Competency and Solution Design</b>		<b>40</b>	<b>Capabilities of all JV Partners will be Considered</b>	
E1	Presentation on Competency	Water Management Competency	14	Presentation	
		Solar Projects Competency	2		
		IOT Projects Competency	2		
		Civil Projects Competency	6		
E2	Presentation on Solution Design	Solution Design	8		
		Project Management Planning	4		
		O&M Support Planning	4		

All claims to be supported by relevant documents / certificates. Onus of substantiating claims lies with the bidder.

### 3. FINAL EVALUATION

Financial bid of the qualified bidders shall be downloaded on the scheduled date & time in the presence of the Tender Committee. Final evaluation will be done among the short listed bidders in accordance with Quality & Cost and will involve both Techno Commercial & Financial Evaluation with the following weight-age.

A	Techno Commercial Evaluation	70%
B	Financial Evaluation	30%

Commercial Bid Score (BS) will be calculated for each responsive bid using the following formula which permits a comprehensive assessment of the bid price and techno commercial merits of each bid.

# WEBEL TECHNOLOGY LIMITED

$$BS = \frac{TC}{TTC} \times 0.70 + \frac{LBP}{BP} \times 0.30$$

Where

BS	-	Evaluated BidScore
BP	-	Amount of Bid Price of bidder
LBP	-	Lowest Amount of Bid Price among bidders
TC	-	Techno Commercial Score awarded to bidder
TTC	-	Total Techno Commercial Score (100 marks in this case)

The bid with the highest Evaluated Bid Score (BS) among the responsive bids shall be most responsive bid.

#### 4. AWARDING OF CONTRACT

An affirmative Post Qualification determination will be prerequisite for award of the contract to the lowest quoted bidder. A negative determination will result in rejection of bidder's bid, in which event the WTL will proceed to the next lowest evaluated bidder to make a similar determination of that bidder's capability to perform satisfactorily. The successful bidder (s) will have to give security deposit in the form of Performance Bank Guarantee.

#### 5. POST QUALIFICATION

The determination will evaluate the Bidder's financial, technical, design, integration, customization, production, management and support capabilities and will be based on an examination of the documentary evidence of the Bidder's qualification, as well as other information WTL deems necessary and appropriate. This determination may include visits or interviews with the Bidder's client's reference in its bid, site inspection, and any other measures. At the time of post-qualification, Department of Par & e-Governance may also carry out tests to determine that the performance or functionality of the Information System offered meets those stated in the detailed Technical Specification.

# WEBEL TECHNOLOGY LIMITED

## SECTION – H

### GUIDANCE FOR E-TENDERING

Instructions / Guidelines for electronic submission of the tenders have been annexed for assisting the Bidders to participate in e-Tendering.

1. **Registration of Bidder:**

Any Bidder willing to take part in the process of e-Tendering will have to be enrolled & registered with the Government e-Procurement System through logging on to <https://wbtenders.gov.in>. The Bidder is to click on the link for e-Tendering site as given on the web portal.

2. **Digital Signature Certificate (DSC):**

Each Bidder is required to obtain a Class-II or Class-III Digital Signature Certificate (DSC) for submission of tenders from the approved service provider of the National Informatics Centre (NIC) on payment of requisite amount. Details are available at the Web Site stated above. DSC is given as a USB e-Token.

3. The Bidder can search & download N.I.T. & BOQ electronically from computer once he logs on to the website mentioned above using the Digital Signature Certificate. This is the only mode of collection of Tender Documents.

4. **Participation in more than one work:**

A prospective bidder shall be allowed to participate in the job either in the capacity of individual or as a partner of a firm. If, found to be applied severally in a single job all the applications will be rejected.

5. **Submission of Tenders:**

Tenders are to be submitted through online to the website stated above in two folders at a time, one in Techno Commercial Proposal & the other is Financial Proposal before the prescribed date & time using the Digital Signature Certificate (DSC). The documents are to be uploaded virus scanned copy duly Digitally Signed. The documents will get encrypted (transformed into non-readable formats)

The proposal should contain scanned copies of the following in two covers (folders).

**Techno Commercial Cover:**

**Technical Document1**

1. Bid Form as per format (Section – F)
2. Other documents, if any

**Technical Document2**

1. NIT Declaration duly stamped & signed in bidder's letter head, (Section – Q)
2. Other documents, if any

**Technical Compliance**

1. Detailed Technical Specification with required documents, Section – R
2. Manufacturer Authorization Form, Section – S

**Financial Cover:**

BOQ (Bill of Quantity) will be downloaded and same will be uploaded with quoted rates. While uploading BOQ file name shall remain unchanged. Absence of this document shall lead to summary rejection of the bid.

## WEBEL TECHNOLOGY LIMITED

**NON-STATUTORY COVER (MYSPACE) CONTAIN FOLLOWING DOCUMENT:**

**(In each folder, scanned copy will be uploaded with single file having multiple pages)**

Sl. No.	Category Name	Sub Category Name	Sub Category Description
A	CERTIFICATES	A1. CERTIFICATES	<ul style="list-style-type: none"> <li>• GST Registration Number</li> <li>• PAN</li> <li>• Document as per Section – C</li> </ul>
B	COMPANY DETAILS	B1. COMPANY DETAILS 1	<ul style="list-style-type: none"> <li>• Document as per Section – C</li> <li>• Declaration as per Section – C</li> </ul>
		B2. COMPANY DETAILS 2	<ul style="list-style-type: none"> <li>• Company Profile (Not more than 3 pages)</li> <li>• ISO Certificate as per Section –C</li> </ul>
C	CREDENTIAL	CREDENTIAL 1	<ul style="list-style-type: none"> <li>• Order copies as per Section – C</li> </ul>
		CREDENTIAL 2	<ul style="list-style-type: none"> <li>• Product brochure</li> <li>• Other documents, if any</li> </ul>
D	DECLARATION	DECLARATION 1	<ul style="list-style-type: none"> <li>• List of Clients as per format (Section – N)</li> <li>• Financial Capability of Bidder as per format (Section – K)</li> </ul>
		DECLARATION 2	<ul style="list-style-type: none"> <li>• Document as per Section – C</li> <li>• Other documents, if any</li> </ul>
		DECLARATION 3	<ul style="list-style-type: none"> <li>• Bidder’s Details as per format (Section – L)</li> <li>• Service Centre Details as per format (Section – T)</li> <li>• Declaration as per Section – O</li> </ul>
		DECLARATION 4	<ul style="list-style-type: none"> <li>• Details of Order as per format (Section – J)</li> <li>• Documents as per Section – X</li> </ul>
		DECLARATION 5	<ul style="list-style-type: none"> <li>• Declaration as per Section – C</li> <li>• Eligibility Criteria Documents (Section – X)</li> </ul>
F	FINANCIAL INFO	P/L & BALANCE SHEET 2020-2021	P/L & BALANCE SHEET 2020-2021
		P/L & BALANCE SHEET 2021-2022	P/L & BALANCE SHEET 2021-2022
		P/L & BALANCE SHEET 2022-2023	P/L & BALANCE SHEET 2022-2023
		P/L & BALANCE SHEET 2023-2024	P/L & BALANCE SHEET 2023-2024
		P/L & BALANCE SHEET 2024-2025	P/L & BALANCE SHEET 2024-2025

# WEBEL TECHNOLOGY LIMITED

## SECTION – I

### BILL OF MATERIAL

Sr.	Description	UoM	Qty
<b>A</b>	<b>Survey &amp; Design for Integrated Rainwater Harvesting System</b>		
1	Rooftop Rainwater Collection & Storage system for Purulia Layer Farm <b>(Refer Deliverables as specified in Section B: Specifications &amp; Estimates)</b>	LS	1
2	Runoff Water Collection & Storage System for Purulia Layer Farm <b>(Refer Deliverables as specified in Section B: Specifications &amp; Estimates)</b>	LS	1
<b>B</b>	<b>Rooftop Rainwater Collection System</b>		
3	Supply & installation of gutters of PVC pipe of suitable size with brackets, supports, fasteners, and anchoring. – As per Specification, site Requirement and Approved Design Report <b>(Refer Section B for Specifications &amp; Estimates)</b>	LS	1
4	Supply & installation of down-take pipes of PVC Pipe of required diameter with metal clamps & fixtures. As per site Requirement and Design Report <b>(Refer Section B for Specifications &amp; Estimates)</b>	LS	1
<b>C</b>	<b>Primary Filtration for Rooftop Rainwater Collection System</b>		
5	Supply & installation of Self-Cleaning Primary Rainwater Filters (SS 304 element, wall-mounted, automatic flushing mechanism- As per Technical Specification- 40 Nos. <b>(Refer Section B for Specifications &amp; Estimates)</b>	No	40
<b>D</b>	<b>Water Conveyance System for Rooftop Rainwater Collection System</b>		
6	Supply, laying, jointing, and testing of HDPE pipeline (OD 250 mm, PN class as per design) including trenching, backfilling, and compaction. <b>(Refer Section B for Specifications &amp; Estimates)</b>	LS	1
7	Supply, laying, jointing, and testing of HDPE pipeline (OD 315 mm, PN class as per design) including trenching, backfilling, and compaction. <b>(Refer Section B for Specifications &amp; Estimates)</b>	LS	1
<b>E</b>	<b>Drainage Network for Runoff Rainwater Collection System</b>		
8	Supply of civil materials and Construction of main drain of suitable size of length along farm boundary, designed to carry runoff to the proposed reservoirs based on natural contour. The maximum dimension of the Main Drain shall be 1.0 MTR width X 1.70 MTR depth. <b>(Refer Section B for Specifications &amp; Estimates)</b>	LS	1
9	Supply of civil materials and Construction of tributaries of suitable size and slope, feeding into the main drain based on contour data. Estimated 12 nos tributary drains of maximum dimension of the tributary drain shall be 0.50 MTR width X 0.70 MTR depth. <b>(Refer Section B for Specifications &amp; Estimates)</b>	LS	1

## WEBEL TECHNOLOGY LIMITED

<b>F</b>	<b>Reservoir &amp; Civil Works:</b>		
10	Construction of RCC Covered Reservoir of minimum 6,00,000 litre capacity, including excavation, formwork, reinforcement, concreting, waterproofing, and finishing. (As per Approved Drawing) <b>(Refer Section B for Specifications &amp; Estimates)</b>	LS	1
<b>G</b>	<b>Solar Pumping System</b>		
11	Supply & installation of 3 HP Solar Pump set with suitable discharge & head capacity along with Solar PV System with panel structures, hybrid controller (Solar + Grid), cabling, earthing, and lightning arrester. <b>(Refer Section B for Specifications &amp; Estimates)</b>	LS	1
<b>H</b>	<b>Water Treatment &amp; Delivery</b>		
12	Supply & installation of Water Treatment Unit, as per Specification, All inclusive: <ul style="list-style-type: none"> <li>• Turbidity Filter</li> <li>• Activated Carbon Filter</li> <li>• Chlorine Dosing Unit</li> </ul> <b>(Refer Section B for Specifications &amp; Estimates)</b>	LS	1
<b>I</b>	<b>Civil, Structural &amp; Ancillary Works</b>		
13	Construction and finishing of reservoirs, filters, chambers, and related civil works. Supply & installation of supports, clamps, fasteners, anchoring, and scaffolding for gutters/pipelines. <ul style="list-style-type: none"> <li>• Execution as per engineering standards, durability, and safety norms.</li> <li>• Testing, commissioning, and submission of as-built drawings.</li> <li>• Submission of O&amp;M manual.</li> <li>• Providing and ensuring 5 Point Safety Gears for Field Workers</li> </ul> <b>(Refer Section B for Specifications &amp; Estimates)</b>	LS	1
<b>J</b>	<b>Integrated Monitoring System</b>		
14	Supply, Installation & Integration of IOT Based Monitoring System along with 4G SIM based IOT Gateway, Sensors for <b>Rainfall measurement</b> (rain gauge sensor – intensity and duration), <b>Reservoir water level</b> (ultrasonic or pressure sensors – to avoid overflow or dry tank conditions), <b>Turbidity (NTU) – clarity of water</b> , <b>pH level – acidity/alkalinity</b> , <b>Residual Chlorine</b> , <b>TDS (Water Hardness)</b> , <b>Pump status</b> (on/off, current, voltage, energy consumption), <b>Solar Generation</b> and Online Dashboard as per specifications <b>(Refer Section B for Specifications &amp; Estimates)</b>	LS	1
<b>K</b>	<b>Post Warranty Non-comprehensive Annual Maintenance Support</b>		
15	AMC for Year-1 <b>(Refer Section B for Specifications &amp; Estimates)</b>	LS	1
16	AMC for Year-2 <b>(Refer Section B for Specifications &amp; Estimates)</b>	LS	1
17	AMC for Year-3 <b>(Refer Section B for Specifications &amp; Estimates)</b>	LS	1

**WEBEL TECHNOLOGY LIMITED**

**SECTION – J**

**DETAILS OF ORDER EXECUTED BY BIDDER**

(Tender No. WTL/ARD/RWH/25-26/030)

<b>Sl. No.</b>	<b>Order No.</b>	<b>Order Date</b>	<b>Order Value</b>	<b>Brief description of items and job details</b>	<b>Completed (Yes/NO)</b>	<b>Name of the Customer</b>	<b>Contact details of the Customer</b>

Authorized Signatory (Signature In full): \_\_\_\_\_

Name and title of Signatory: \_\_\_\_\_

Stamp of the Company: \_\_\_\_\_

- a. Type of Project shall indicate the implementation of services (Networking Setup, System Integration).
- b. Scope of work shall indicate whether it is implementation, Operation or maintenance.
- c. Submit Customer Order Copy details of the order indicating the project value, customer contact details, project completion certificate, customer satisfaction certificate etc.

**WEBEL TECHNOLOGY LIMITED**

**SECTION – K**

**FINANCIAL CAPABILITY OF BIDDER**

(Tender No. WTL/ARD/RWH/25-26/030)

**FINANCIAL INFORMATION**

Sl. No.	Name of the Bidder	Turnover (Rs. / Crores)				
		2020-21	2021-22	2022-23	2023-24	2024-25
1						

Authorized Signatory (Signature In full): \_\_\_\_\_

Name and title of Signatory: \_\_\_\_\_

Stamp of the Company: \_\_\_\_\_

# WEBEL TECHNOLOGY LIMITED

## SECTION – L

### **BIDDERS'S DETAILS**

(Tender No. WTL/ARD/RWH/25-26/030)

1	Name of the Firm	
2	Registered Office Address	
	Contact Number	
	Fax Number	
	E-mail	
3	Correspondence / Contact address	
	Name & Designation of Contact person	
	Address	
	Contact Number	
	Fax Number	
	E-mail	
4	Is the firm a registered company? If yes, submit documentary proof	
	Year and Place of the establishment of the company	
6	Former name of the company, if any	
7	<p>Is the firm</p> <ul style="list-style-type: none"> <li>▪ a Government/ Public Sector Undertaking</li> <li>▪ a propriety firms</li> <li>▪ a partnership firm (if yes, give partnership deed)</li> <li>▪ a limited company or limited corporation</li> <li>▪ a member of a group of companies, (if yes, give name and address and description of other companies)</li> <li>▪ a subsidiary of a large corporation (if yes give the name and address of the parent organization). If the company is subsidiary, state what involvement if any, will the parent company have in the project.</li> </ul>	
8	Is the firm registered with Sales Tax department? If yes, submit valid GST Registration certificate.	
9	Is the firm registered for Service Tax with Central Excise Department (Service Tax Cell)? If yes, submit valid Service Tax registration certificate.	
10	Total number of employees. Attach the organizational chart showing the structure of the organization.	
11	Are you registered with any Government/ Department/ Public Sector Undertaking (if yes, give details)	
12	How many years has your organization been in business under your present name? What were your fields when you established your organization	
13	<p>What type best describes your firm? (Purchaser reserves the right to verify the claims if necessary)</p> <ul style="list-style-type: none"> <li>▪ Manufacturer</li> <li>▪ Supplier</li> <li>▪ System Integrator</li> <li>▪ Consultant</li> <li>▪ Service Provider (Pl. specify details)</li> <li>▪ Software Development</li> <li>▪ Total Solution provider (Design, Supply, Integration, O&amp;M)</li> <li>▪ IT Company</li> </ul>	
14	Number of Offices in district headquarters in West Bengal	
15	Is your organization having ISO 9001:2015 certificates?	

## **WEBEL TECHNOLOGY LIMITED**

16	List the major clients with whom your organization has been / is currently associated.	
17	Have you in any capacity not completed any work awarded to you? (If so, give the name of project and reason for not	
18	Have you ever been denied tendering facilities by any Government / Department / Public sector Undertaking?	

Authorized Signatory (Signature In full): \_\_\_\_\_

Name and title of Signatory: \_\_\_\_\_

Company Rubber Stamp: \_\_\_\_\_

**WEBEL TECHNOLOGY LIMITED**

**SECTION – M**

**PRE-BID MEETING QUERY**

(Tender No. WTL/ARD/RWH/25-26/030)

Name of the Bidder:

Queries

<b>Sl. No.</b>	<b>Section No.</b>	<b>Clause No.</b>	<b>Page No.</b>	<b>Queries</b>

**Note:** The filled form to be submitted in XLS and PDF Format. There is a cut off date for receiving of queries before Pre Bid Meeting. Queries received after the cutoff period will not be accepted. The Purchaser reserves the right to respond all queries over e-mail.

Authorized Signatory (Signature In full): \_\_\_\_\_

Name and title of Signatory: \_\_\_\_\_

Company Rubber Stamp: \_\_\_\_\_



**WEBEL TECHNOLOGY LIMITED**

**SECTION – O**

**DECLARATION BY THE BIDDER**

(Tender No. WTL/ARD/RWH/25-26/030)

**(Mandatory to be uploaded in the e-Bid)**

**(To be uploaded under Company letter head with full address, phone no., mail id etc., duly signed & sealed)**

**I/We have inspected the site of work** and have made myself/ourselves fully acquainted with local conditions in and around the site of work.

I /We have carefully gone through the Notice Inviting e-Tender and other tender documents mentioned therein along with the scope of work.

I/We have also carefully gone through the 'Priced schedule of Probable Items and Quantities'.

My/Our tender is offered taking due consideration of all factors regarding the local site conditions stated in this Detailed Notice Inviting e-Tender to complete the proposed construction as per drawings referred to above in all respects.

I/We promise to abide by all the stipulations of the contract documents and to carry out and complete the work in due time as mentioned in Award of Contract to the full satisfaction of the Engineer-In-Charge, **Otherwise necessary Clauses as per rules will be imposed on me/us .**

I/We also agree to procure tools and plants, at my/our own cost required for the work.

Authorized Signatory (Signature In full): \_\_\_\_\_

Name and title of Signatory: \_\_\_\_\_

Company Rubber Stamp: \_\_\_\_\_

**Signature of the Officer In-Charge / Representative Present During Site Visit**

.....  
Signature

.....  
Name in full

.....  
Designation

.....  
Seal

# WEBEL TECHNOLOGY LIMITED

## SECTION – P

### PROFORMA FOR PERFORMANCE BANK GUARANTEE

(On non-judicial stamp paper of appropriate value to be purchased in the name of executing Bank)

PROFORMA OF BANK GUARANTEE FOR SECURITY DEPOSIT – CUM-PRFORMANCE GUARANTEE

Ref ..... Bank Guarantee no.....

Date.....

#### PROFORMA OF BG FOR SECURITY DEPOSIT

KNOW ALL MEN BY THESE PRESENTS that in consideration of WEBEL TECHNOLOGY LIMITED, a Government of West Bengal Undertaking incorporated under the Companies Act, 1956 having its Registered office at Plot - 5, Block BP, Sector V, Kolkata-700 091 (hereinafter called "The Purchaser") having agreed to accept from \_\_\_\_\_ (hereinafter called "The Contractor") Having its Head Office at \_\_\_\_\_, a Bank guarantee for Rs. \_\_\_\_\_ in lieu of Cash Security Deposit for the due fulfillment by the Contractor of the terms & conditions of the Work Order No. dated \_\_\_\_\_ issued by the Purchaser for \_\_\_\_\_ (hereinafter called "the said work order No. \_\_\_\_\_ dated \_\_\_\_\_").

- (1) We \_\_\_\_\_ (Name & detailed address of the branch) (hereinafter called "the Guarantor") do hereby undertake to indemnify and keep indemnified the Purchaser to the extent of Rs. \_\_\_\_\_ (Rupees \_\_\_\_\_) only against any loss or damage caused to or suffered by the Purchaser by reason of any breach by the Contractor of any of the terms and conditions contained in the said Work Order No. \_\_\_\_\_ dated \_\_\_\_\_ of which breach the opinion of the Purchaser shall be final and conclusive.
- (2) AND WE, \_\_\_\_\_ DO HEREBY Guarantee and undertake to pay forthwith on demand to the Purchaser such sum not exceeding the said sum of \_\_\_\_\_ Rupees ) only as may be specified in such demand, in the event of the Contractor failing or neglecting to execute fully efficiently and satisfactorily the order for Work Order No. \_\_\_\_\_ dated \_\_\_\_\_.
- (3) WE \_\_\_\_\_ further agree that the guarantee herein contained shall remain in full force and effect during the period that would be taken for the performance of the said order as laid down in the said Work Order No. \_\_\_\_\_ dated \_\_\_\_\_ including the warranty obligations and that it shall continue to be enforceable till all the dues of the Purchaser under or by virtue of the said Work Order No. \_\_\_\_\_ dated \_\_\_\_\_ have been fully paid and its claims satisfied or is charged or till the Purchaser or its authorized representative certified that the terms and conditions of the said Work Order No. \_\_\_\_\_ dated \_\_\_\_\_ have been fully and properly carried out by the said contractor and accordingly discharged the guarantee.
- (4) We \_\_\_\_\_ the Guarantor undertake to extend the validity of Bank Guarantee at the request of the contractor for further period of periods from time to time beyond its present validity period failing which we shall pay the Purchaser the amount of Guarantee.
- (5) The liability under the Guarantee is restricted to Rs. (Rupees \_\_\_\_\_) only and will expire on and unless a claim in writing is presented to us or an action or suit to enforce the claim is filled against us within 6 months from \_\_\_\_\_ all your rights will be forfeited and we shall be relieved of and discharged from all our liabilities (thereinafter)
- (6) The Guarantee herein contained shall not be determined or affected by liquidation or winding up or insolvency or closer of the Contractor.
- (7) The executants has the power to issue this guarantee on behalf of Guarantor and holds full and valid power of Attorney granted in his favour by the Guarantor authorizing him to execute the Guarantee.

**WEBEL TECHNOLOGY LIMITED**

(8) Notwithstanding anything contained herein above, our liability under this guarantee is restricted to Rs. \_\_\_\_\_ (Rupees \_\_\_\_\_) only and our guarantee shall remain in force up to and unless a demand or claim under the guarantee is made on us in writing on or before all your rights under the guarantee shall be forfeited and we shall be relieved and discharged from all liabilities there under.

WE, lastly undertake not to revoke this guarantee during the currency except with the previous consent of the Purchaser in writing. In witness whereof we have set and subscribed our hand on this \_ day of

\_\_\_\_\_  
SIGNED, SEALED AND DELIVERED

\_\_\_\_\_  
(Stamp of the executants)

WITNESS

1) \_\_\_\_\_

2) \_\_\_\_\_

(Name & address in full with Rubber Stamp)

## **WEBEL TECHNOLOGY LIMITED**

### **INSTRUCTIONS FOR FURNISHING BANK GUARANTEE**

1. Bank Guarantee (B.G.) for Advance payment, Mobilization Advance, B.G. for security Deposit-cum-Performance Guarantee, Earnest Money should be executed on the Non- Judicial Stamp paper of the applicable value and to be purchased in the name of the Bank.
2. The Executor (Bank authorities) may mention the Power of Attorney No. and date of execution in his/her favour with authorization to sign the documents. The Power of Attorney is to be witnessed by two persons mentioning their full name and address.
3. The B.G. should be executed by a Nationalised Bank/ Scheduled Commercial Bank preferably on a branch located in Kolkata. B.G. from Co-operative Bank / Rural Banks is not acceptable.
4. A Confirmation Letter of the concerned Bank must be furnished as a proof of genuineness of the Guarantee issued by them.
5. Any B.G. if executed on Non-Judicial Stamp paper after 6 (six) months of the purchase of such stamp shall be treated as non-valid.
6. Each page of the B.G. must bear signature and seal of the Bank and B.G. Number.
7. The content of the B.G. shall be strictly as Proforma prescribed by WTL in line with Purchase Order /LOI/ Work Order etc. and must contain all factual details.
8. Any correction, deletion etc. in the B.G. should be authenticated by the Bank Officials signing the B.G.
9. In case of extension of a Contract the validity of the B.G. must be extended accordingly.
10. B.G. must be furnished within the stipulated period as mentioned in Purchase Order / LOI / Work Order etc.
11. Issuing Bank / The Bidder are requested to mention the Purchase Order / Contract / Work Order reference along with the B.G. No. For making any future queries to WTL.

**WEBEL TECHNOLOGY LIMITED**

**SECTION – Q**

**NIT DECLARATION FOR BIDDER**

(Bidders are requested to furnish the Format given in this section, filling the entire Blank and to be submitted on Bidder’s Letter Head)

To  
**Webel Technology Limited**  
**Plot-5, Block-BP, Sector-V,**  
**Salt Lake City, Kolkata-**  
**700091.**

**Sub: Design, Supply, Installation, Commissioning and Maintenance of Integrated Rainwater Harvesting System at Purulia Layer Farm, Gobindapur, Purulia, West Bengal of West Bengal.**

Dear Sir,

We the undersigned bidder/(s) declare that we have read and examined in details the specifications and other documents of the subject Tender No. WTL/ARD/RWH/25-26/030 dated 25.09.2025 for the Design, Supply, Installation, Commissioning and Maintenance of Integrated Rainwater Harvesting System at Purulia Layer Farm, Gobindapur, Purulia, West Bengal of West Bengal published by Webel Technology Limited in e-Tender website.

We further declare that we have agreed and accepted all the clauses / sub-clauses / formats / terms & conditions other requirements related to the said tender and we will abide by the same as mentioned in the tender document while participating and executing the said tender.

Thanking you, we remain

Yours faithfully

.....  
Signature

.....  
Name in full

.....  
Designation

.....  
Company Stamp

Dated, this.....day of.....2025

# WEBEL TECHNOLOGY LIMITED

## SECTION – R TECHNICAL & CERTIFICATION COMPLIANCE

(Tender No. WTL/ARD/RWH/25-26/030)

Sr.	Description	Complied Yes/No	Remarks
<b>A</b>	<p><b>Survey &amp; Design for Integrated Rainwater Harvesting System</b></p> <ul style="list-style-type: none"> <li>• Submit a detailed technical report and layout drawings, including the proposed pipeline path, reservoir design and system integration.</li> <li>• Submit drawings for drain layout (main drain + tributary drains), reservoir construction, and pumping system based on contour data and site conditions.</li> <li>• Conduct a detailed contour study for the entire farm area to study the topography and recommend the most suitable reservoir location considering existing structures and site conditions.</li> <li>• Prepare and submit the final layout on the contour map, mapping and plotting the present shades, with technical justification for the reservoir site selection, pipeline alignment, catchment area, hydraulic head and drain layout (main drain + tributary drains).</li> <li>• Carry out hydraulic design calculations based on local rainfall data to determine flow rates, gutter sizing, down take pipe diameters, and pipeline class including rainfall analysis, runoff calculations, drain sizing, and reservoir design.</li> </ul>		
1	For Rooftop Rainwater Collection System		
2	For Runoff Rainwater Collection System		
<b>B</b>	<b>Rooftop Rainwater Collection System</b>		
3	Supply and Installation of gutters, PVC pipe with slot to insert the edge of the shed or Half Round pipe of size minimum 250mm with average wall thickness of 3.60 mm with Fittings like Joint Bracket, Stop End Outlet, Clamp and Running Outlet.		
4	PVC down take pipes of minimum size 160 mm OD with 4.0 mm to 4.6 mm wall thickness which will take water from Gutter and transfer to the pipes on Ground Level.		
<b>C</b>	<b>Primary Filtration for Rooftop Rainwater Collection System</b>		
5	<ul style="list-style-type: none"> <li>o Rainwater enters tangentially into the filter housing, creating angular flow along the periphery.</li> <li>o Water passes through an SS 304 filter element in angular motion, enabling dirt segregation by cohesive force.</li> <li>o Under heavy rainfall, centrifugal force assists in separating debris, sand, and dirt, which are automatically flushed out through a drain outlet.</li> <li>o Clean water shall be diverted to the reservoir/recharge well.</li> </ul>		
<b>D</b>	<b>Water Conveyance System for Rooftop Rainwater Collection System</b>		
6	Supply, laying, jointing, and testing of HDPE pipeline (OD 250 mm, PN class as per design) including trenching, backfilling, and compaction		
7	Supply, laying, jointing, and testing of HDPE pipeline (OD 315 mm, PN class as per design) including trenching, backfilling, and compaction.		
<b>E</b>	<b>Drainage Network for Runoff Rainwater Collection System</b>		
8	Supply of civil materials and Construction of main drain of suitable size of length along farm boundary, designed to carry runoff to the proposed reservoirs based on natural contour. The maximum dimension of the Main Drain shall be 1.0 MTR width X 1.70 MTR depth		

## WEBEL TECHNOLOGY LIMITED

9	Supply of civil materials and Construction of tributaries of suitable size and slope, feeding into the main drain based on contour data. Estimated 12 nos tributary drains of maximum dimension of the tributary drain shall be 0.50 MTR width X 0.70 MTR depth		
<b>F</b>	<b>Reservoir &amp; Civil Works:</b>		
10	Construction of RCC Covered Reservoir of minimum 6,00,000 litre capacity, including excavation, formwork, reinforcement, concreting, waterproofing, and finishing. (As per Approved Drawing)		
<b>G</b>	<b>Solar Pumping System</b>		
11	<p><b>i) Solar Pump</b></p> <ul style="list-style-type: none"> <li>• Capacity (Motor Rating):3 HP (2.2 kW).</li> <li>• Operating Voltage: 220–240V AC (single-phase) or 415V AC (three-phase).</li> <li>• Rated Head: &gt; 15M (to be finalized by the Agency based on OHT height + pipeline friction losses).</li> <li>• Discharge Capacity: Approx. &gt;1,20,000 LPD (@ average solar irradiation, 6–7 hours per day, &gt;15M head).</li> <li>• Pump Efficiency: ≥ 40% at duty point.</li> <li>• Motor Efficiency: ≥ 75%, with IP 55 protection class and F-class insulation.</li> </ul>		
	<p><b>ii) Solar PV Panels</b></p> <ul style="list-style-type: none"> <li>o Type: Polycrystalline / Monocrystalline PERC with minimum 19–20% efficiency.</li> <li>o Capacity: &gt;3 kWp (to match 3 HP motor requirement, considering derating).</li> <li>o Voltage: As per Vmp of pump controller (generally 350–380 V DC).</li> <li>o Certifications: IEC 61215 / 61730 / 61701 (Salt Mist), MNRE approved.</li> </ul> <p>PV Array Mounting Structure:</p> <ul style="list-style-type: none"> <li>o Material: Hot Dip Galvanized MS, minimum 80-micron zinc coating.</li> <li>o Tilt Angle: As per site latitude (≈ 23° for Purulia). Adjustable tilt preferred.</li> <li>o Wind Load Resistance: Min. 150 km/h.</li> </ul>		
	<p><b>iii) Pump Controller (Hybrid VFD with MPPT)</b></p> <ul style="list-style-type: none"> <li>• Technology: MPPT (Maximum Power Point Tracking) based Solar Pump Controller.</li> <li>• Hybrid Operation: Dual input support (Solar + Grid/DG). Auto changeover enabled.</li> <li>• Protection Features: <ul style="list-style-type: none"> <li>o Dry run protection</li> <li>o Reverse polarity &amp; surge protection.</li> <li>o Overload &amp; short-circuit protection.</li> </ul> </li> <li>• Efficiency: ≥ 95%.</li> <li>• Display &amp; Monitoring: Digital LCD/LED display for voltage, current, power, head, discharge, operating hours.</li> </ul>		
	<p><b>iv) Pump Controller (Hybrid VFD with MPPT)</b></p> <ul style="list-style-type: none"> <li>• Cabling: UV-resistant, XLPE insulated copper cables (DC &amp; AC sides) as per IS 694/IS 1554.</li> <li>• PV array earthing: 2 Nos. GI earth electrodes.</li> <li>• Lightning Protection: Lightning Arrester with spike, connected to separate earth pit.</li> <li>• Surge Protection: SPD on DC and AC sides</li> </ul>		
<b>H</b>	<b>Water Treatment &amp; Delivery</b>		
12	<p>a. <b>Turbidity Filter/ Multi Grade Filter Capacity:</b> about 19000 LPH with MOC: FRP or PVC with Media quantity minimum 1000 kg of Sand and 100 kg Gravels. Size of pressure vessel should be approximately: 36 inch X 72 inch</p> <p>b. <b>Activated Carbon Filter:</b> Capacity of about 19000 LPH with MOC: FRP or PVC with minimum 320 kg Carbon. Size of Pressure vessel should be approximately: 36 inch X 72 inch</p> <p>c. <b>Chlorine Dosing System</b> of 1.5/3.0/6.0/10.0 LPH at 4 kg/sq.cm</p>		

## WEBEL TECHNOLOGY LIMITED

<b>I</b>	<b>Civil, Structural &amp; Ancillary Works</b>		
13	<ul style="list-style-type: none"> <li>• Complete construction and finishing of all civil structures including reservoir, filter foundations, chambers, and other related works.</li> <li>• Supply and installation of support structures, clamps, fasteners, and anchoring for gutters and pipelines.</li> <li>• Ensure all works are executed in line with standard engineering practices, site safety norms, and durability requirements.</li> <li>• Supply &amp; installation of metal clamps, supports, scaffolding arrangements for gutters &amp; down take pipes.</li> <li>• Testing, commissioning, and as-built drawings and O&amp;M Manual submission</li> <li>• Ensuring 5 Point Safety of Workers on field</li> </ul>		
<b>J</b>	<b>Integrated Monitoring System</b>		
14	Supply, Installation & Integration of IOT Based Monitoring System along with 4G SIM based IOT Gateway, Sensors for <b>Rainfall measurement</b> (rain gauge sensor – intensity and duration), <b>Reservoir water level</b> (ultrasonic or pressure sensors – to avoid overflow or dry tank conditions), Turbidity (NTU) – <b>clarity of water</b> , pH level – <b>acidity/alkalinity</b> , <b>Residual Chlorine</b> , <b>TDS (Water Hardness)</b> , <b>Pump status</b> (on/off, current, voltage, energy consumption), <b>Solar Generation</b> and Online Dashboard as per specifications		
<b>K</b>	<b>Post Warranty Non-comprehensive Annual Maintenance Support</b>		
15	AMC for Year-1 1. Monthly Routine Checks 2. Quarterly Preventive Maintenance 3. Corrective Maintenance (Labour-Only) 4. Monitoring & Reporting 5. Safety & Compliance 6. Documentation & Handover		
16	AMC for Year-2 1. Monthly Routine Checks 2. Quarterly Preventive Maintenance 3. Corrective Maintenance (Labour-Only) 4. Monitoring & Reporting 5. Safety & Compliance 6. Documentation & Handover		
17	AMC for Year-3 1. Monthly Routine Checks 2. Quarterly Preventive Maintenance 3. Corrective Maintenance (Labour-Only) 4. Monitoring & Reporting 5. Safety & Compliance 6. Documentation & Handover		

Authorized Signatory (Signature In full): \_\_\_\_\_

Name and title of Signatory: \_\_\_\_\_

Company Rubber Stamp: \_\_\_\_\_

**WEBEL TECHNOLOGY LIMITED**

**SECTION – S**

**MANUFACTURER’S AUTHORIZATION FORM**

Date:

**To**  
**Webel Technology limited**  
**Plot-5, Block-BP, Sector-V**  
**Salt Lake**  
**Kolkata-700091**

Ref: TenderNo. WTL/ARD/RWH/25-26/030 dated 25.09.2025

WHEREAS \_\_\_\_\_ who are official producers of  
\_\_\_\_\_ and having production facilities at  
\_\_\_\_\_ do hereby authorize  
\_\_\_\_\_ located at  
\_\_\_\_\_(hereinafter, the “Bidder”) to submit a bid of  
the following Products produced by us, for the Supply Requirements associated with the above Invitation  
for Bids.

When resold by \_\_\_\_\_, these products are subject to our applicable standard  
end user warranty terms.

We assure you that in the event of \_\_\_\_\_, not being able to fulfill its obligation as our  
Service Provider in respect of our standard Warranty Terms we would continue to meet our Warranty  
Terms through alternate arrangements.

We also confirm that \_\_\_\_\_ is our authorized service provider/system  
integrator and can hence provide maintenance and upgrade support for our products.

We also confirm that the products quoted are on our current product list and are not likely to be  
discontinued within from the day of this letter. We assure availability of spares for the products for the  
next two years after warranty period.

We also confirm that the material will be delivered within 30(thirty) days from the date of placement of  
confirmed order.

Name \_\_\_\_\_ In the capacity of \_\_\_\_\_

Signed \_\_\_\_\_

Duly authorized to sign the authorization for and on behalf of \_\_\_\_\_

Dated on \_\_\_\_\_ day of \_\_\_\_\_ 2025

**Note:** This letter of authority must be on the letterhead of the Manufacturer and duly signed by an authorized  
signatory.



# WEBEL TECHNOLOGY LIMITED

## SECTION – U

### CHECKLIST FOR ELIGIBILITY CRITERIA

(Tender No. WTL/ARD/RWH/25-26/030)

Sl. No.	Eligibility Criteria	Compliance (Yes / No)	Supporting Documents Attached at Page No of Technical Bid
1	The bidder must be a company registered under Companies Act, 1956/2013 or Partnership or LLP or OPC or Proprietary Firm. Documentary (Certificate of incorporation/Relevant document) evidence to be submitted.		
2	Bids may be submitted by a single entity or as a Joint Venture (JV).		
3	A Joint Venture shall not consist of more than two partners, where partners can collaborate both on technical & financial ground to execute a project.		
4	The JV Agreement (MoU) shall clearly define the roles, responsibilities, and shareholding of each partner. Where one partner shall be designated as the Lead Partner, authorized to incur liabilities and receive instructions on behalf of the JV.		
5	The Lead Partner must hold at least 51% of the financial and technical responsibility of the contract.		
6	2 <sup>nd</sup> partner must hold 21% financial and technical responsibility to make their credentials count to meet the tender criteria.		
7	All partners of the JV shall be jointly and severally liable for the execution of the Contract.		
8	The JV must submit: <ul style="list-style-type: none"><li>• A legally binding JV Agreement/Intent signed by all partners.</li><li>• Power of Attorney authorizing the Lead Partner.</li><li>• Details of financial, technical, and execution capacity of each partner.</li></ul>		
9	No partner may withdraw during the contract period without prior approval of the Employer.		
10	A partner of one JV shall not participate in another JV or individually in the same tender.		
11	The bidder or any of the JV partner should have their presence in the "State" with own office along with WBGST. Valid proof should be in the form of GST certificate should be submitted along with the bid.		
12	The bidder should have valid WBGST Registration Certificate & PAN. Bidder shall have to submit photocopy of the documents.		
13	The bidder should have a total turnover of not less than Rs. 15.00 Cr. covering the last five financial years (considering FY 20-21,21-22,22-23, 23-24 & 24-25). Bidder shall have to submit Audited Balance Sheet / Audited Accounts / Auditor Certificate in support of their claim.		

## WEBEL TECHNOLOGY LIMITED

14	The bidder / JV partner shall have experience in the field of Water Management consultancy and been involved in designing and execution of Total Consultancy Services of >15 Lakhs in last 5 Yrs.		
15	The bidder / JV partner shall have at least one B-Tech Engineer from the field of Agricultural / Civil Engineering		
16	The bidder / JV partner shall have at least one Chartered Engineer		
17	The Bidder / JV partner should have completed a single project of at least INR 1.0 Cr wherein the firm has executed Civil Work and or Solar Power Generating Station for Central Government / State Government / Urban Local Bodies/ PSU in India. Bidder should submit reference order copy with completion certificate/payment certificate with all relevant details for the project to be provided.		
18	The Bidder / JV partner should have executed IOT based remote monitoring system with online dashboard for any Central Government / State Government / Urban Local Bodies/ PSU in India. Bidder should submit reference order copy with completion certificate/payment certificate with all relevant details for the project to be provided.		
19	Bidder & OEM should have a call centre (toll free or otherwise) in West Bengal. Details to be submitted in respective letter head.		
20	The bidder shall submit Bid Form (Section – F) duly signed by the authorized signatory of the company as per the format enclosed. Deviation in format may not be accepted.		
21	Bidder shall submit NIT Declaration (Section – Q) duly signed by the authorized signatory of the company as per the format. Deviation in format may not be accepted.		
22	The Lead Bidder / JV Partner should have minimum ISO certification of ISO 9001:2015. Certificate to be submitted.		
23	The bidder shall not have been blacklisted by any State/Central Government or PSU Organization or bilateral/multilateral funding agencies for breach of ethical conduct or fraudulent practices as on date of submission of the proposal (as per DIT guidance note issued on 26-Dec-2011). Declaration on bidder's letter head to be submitted.		
24	The bidder should have a presence in the form of offices or engineers in West Bengal. This should be substantiated via proof of office or proof of permanent staff at West Bengal. Declaration from HR Head in company letter head should be submitted.		
25	Intending bidder(s) must have to visit site for pre-tender survey on 08.10.2025 or 09.10.2025 (Between 11am to 3pm) and upload the declaration (Section – O) duly signed by the concerned Officer/Representative) during participation. Site Visit is mandatory for Bid Participation.		

**WEBEL TECHNOLOGY LIMITED**

26	Intending Bidder(s) must have to attend Pre-Bid meeting held on mentioned at time schedule at the office of the undersigned. Attendance is mandatory for Bid Participation		
----	----------------------------------------------------------------------------------------------------------------------------------------------------------------------------	--	--

**Note:** Bidder should clearly mention the page no or identification mark for contents of the document. The document submitted should mention all their respective submission as per RFP with proper page no. or identification marking

Authorized Signatory (Signature In full): \_\_\_\_\_

Name and title of Signatory: \_\_\_\_\_

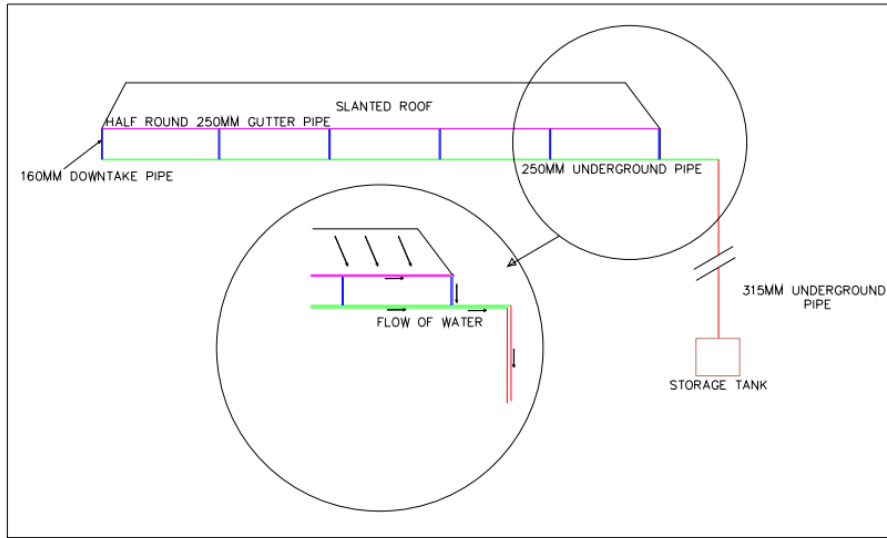
Company Rubber Stamp: \_\_\_\_\_

**WEBEL TECHNOLOGY LIMITED**  
**SECTION - V**

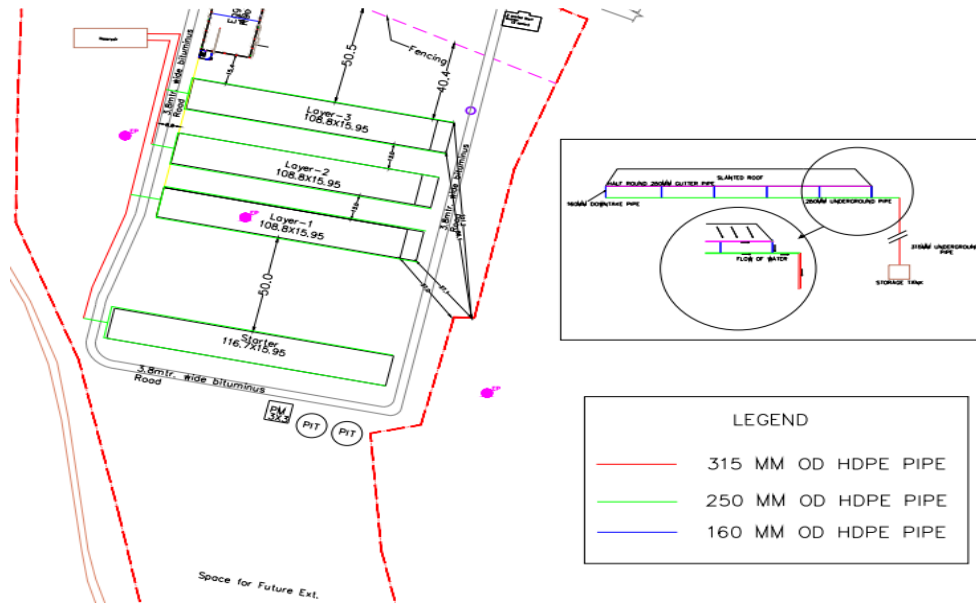
**DRAWING REFERENCES**

(Tender No. WTL/ARD/RWH/25-26/030)

**Schematic Diagram- Pipeline Network for Gutter & Down-take pipe for Rooftop Rainwater Collection System**



**Schematic Diagram Showing Pipeline and Proposed Tank for Rooftop Rainwater Collection System**



# WEBEL TECHNOLOGY LIMITED

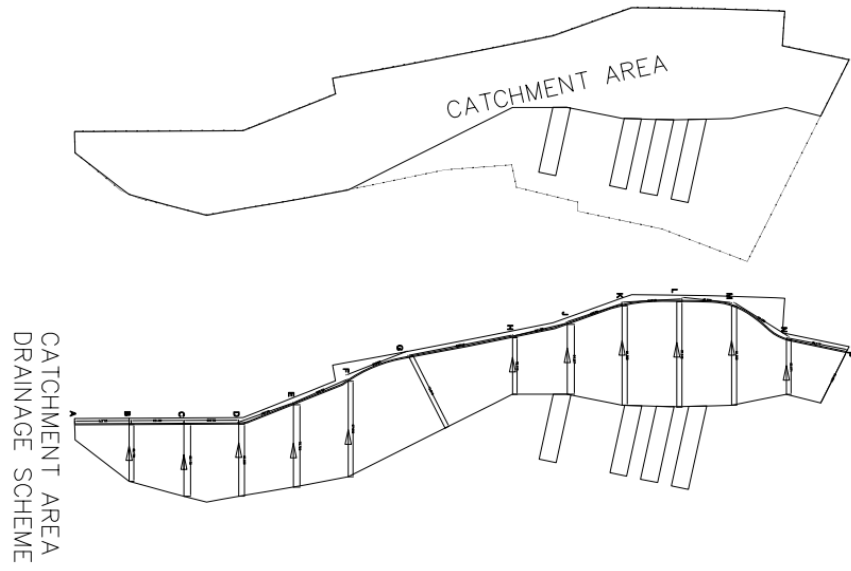
## RAINFALL DATA (Data Courtesy: IMD):

**TABLE - I**  
**Normals and Extremes of Rainfall**

STATION	No. of Years of Data		JAN	FEB	MAR	APR	MAY	JUN	JUL	AUG	SEP	OCT	NOV	DEC	ANNUAL	HIGHEST	LOWEST	HEAVIEST RAINFALL in 24 HOURS *	
																ANNUAL RAINFALL AS % OF NORMAL & YEARS **	Amount (mm)	Date	
Bagmandi	12	a	8.9	23.5	21.1	15.2	32.6	175.1	352.2	267.4	258.0	86.0	4.3	3.1	1247.4	131	70	238.8	21 Jun 1946
		b	0.8	2.0	2.0	1.4	3.1	9.4	16.5	15.4	12.3	4.4	0.3	0.2	67.8	(1961)	(1954)		
Bandwan	14	a	15.8	11.2	6.2	18.9	43.0	230.7	290.5	265.1	258.7	86.0	7.5	0.1	1233.7	154	69	254.5	22 Aug 1953
		b	1.0	1.2	0.6	0.8	2.9	11.0	13.3	13.3	11.4	3.7	0.3	0.0	59.5	(1953)	(1954)		
Barabazar	16	a	17.3	16.2	15.1	12.4	16.7	186.0	256.2	268.3	298.9	80.4	14.8	1.1	1183.4	163	68	246.1	18 Jun 1898
		b	1.0	1.2	1.5	0.8	1.8	8.9	12.9	12.6	12.8	4.5	0.7	0.1	58.8	(1953)	(1955)		
Jhaldah (Jhaldai)	11	a	3.4	11.2	21.4	7.7	13.8	127.1	342.5	281.9	350.2	109.0	3.4	0.8	1272.4	132	78	400.0	19 Oct 1899
		b	0.5	1.1	1.5	0.7	1.2	7.3	15.1	14.0	13.0	5.5	0.3	0.3	60.5	(1959)	(1955)		
Manibazar	12	a	6.5	23.2	25.8	31.4	70.6	168.2	242.2	271.3	253.1	109.1	21.1	4.8	1227.3	128	78	242.3	11 Jul 1942
		b	0.7	1.6	2.3	1.5	4.9	10.4	14.0	14.6	11.6	5.1	0.7	0.3	67.7	(1951)	(1962)		
Para	18	a	15.9	14.5	10.9	17.4	26.8	149.1	289.9	249.3	252.4	81.9	6.0	0.8	1114.9	158	79	168.4	14 Sep 1958
		b	1.4	0.9	1.1	1.5	2.2	8.7	14.9	13.5	10.4	4.4	0.4	0.1	59.5	(1959)	(1962)		
Purulia (Obsy)	48	a	12.7	19.9	22.2	36.4	57.6	221.5	299.1	309.3	267.8	82.9	16.9	8.2	1354.5	158	67	181.6	15 Sep 1958
		b	1.2	1.8	2.0	2.7	4.2	11.0	16.3	16.0	12.5	4.4	1.0	0.7	73.8	(1978)	(1982)		
Raghunathpur	19	a	16.5	15.5	12.0	15.2	28.7	133.7	257.2	255.4	279.8	81.3	11.6	1.6	1108.5	169	77	268.7	07 Sep 1954
		b	1.3	0.9	0.9	1.5	2.6	8.8	15.4	15.9	12.7	4.6	0.8	0.3	65.7	(1956)	(1960)		
Purulia (District)		a	12.1	16.9	16.8	19.3	36.2	173.9	291.2	271.0	277.4	89.6	10.7	2.6	1217.7	176	75		
		b	1.0	1.3	1.5	1.4	2.9	9.4	14.8	14.4	12.1	4.6	0.6	0.3	64.3	(1978)	(1982)		

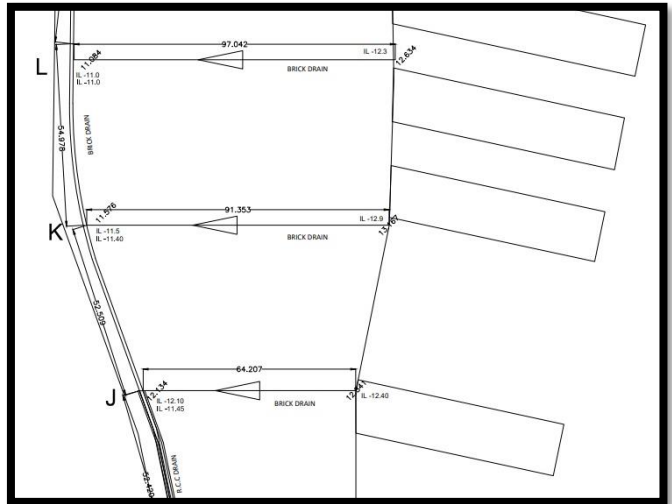
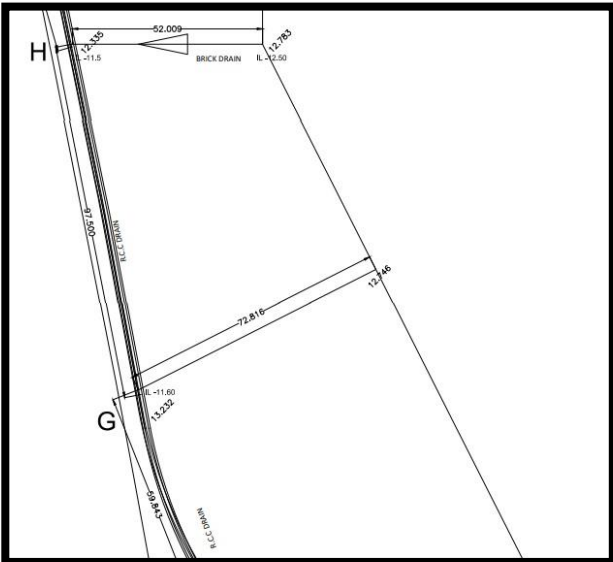
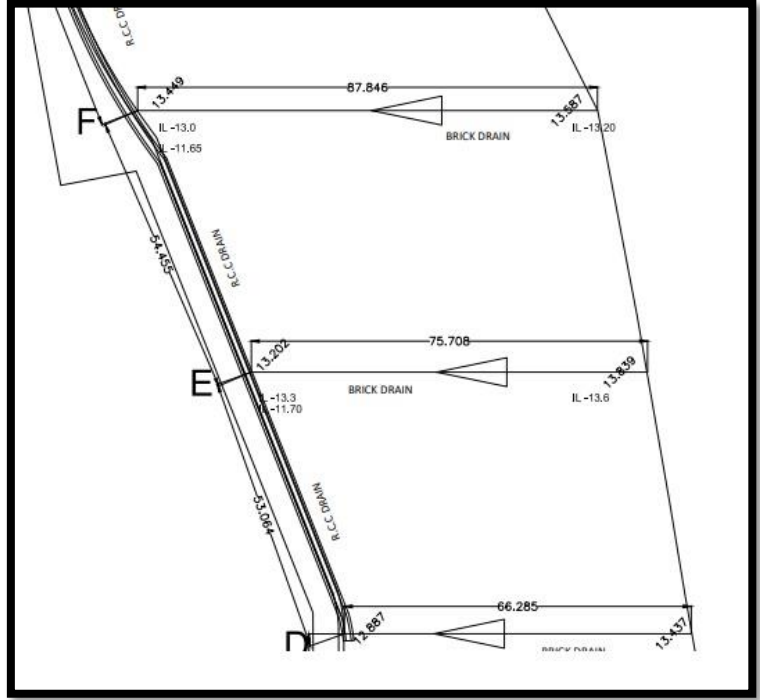
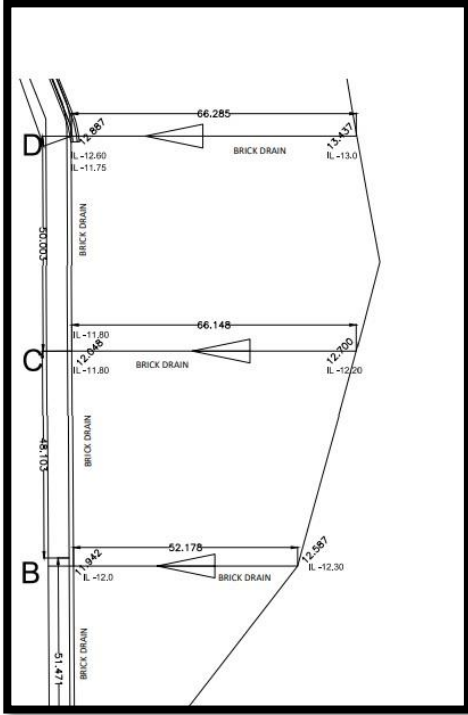
- a: Normal rainfall in mm.
- b: Average number of rainy days (days with rainfall of 2.5 mm or more)
- \* Based on all available data upto 2000..
- \*\* Years of occurrence given in brackets.

### Schematic Diagram- Main Drain and Tributary Drains for Runoff Rainwater Collection System



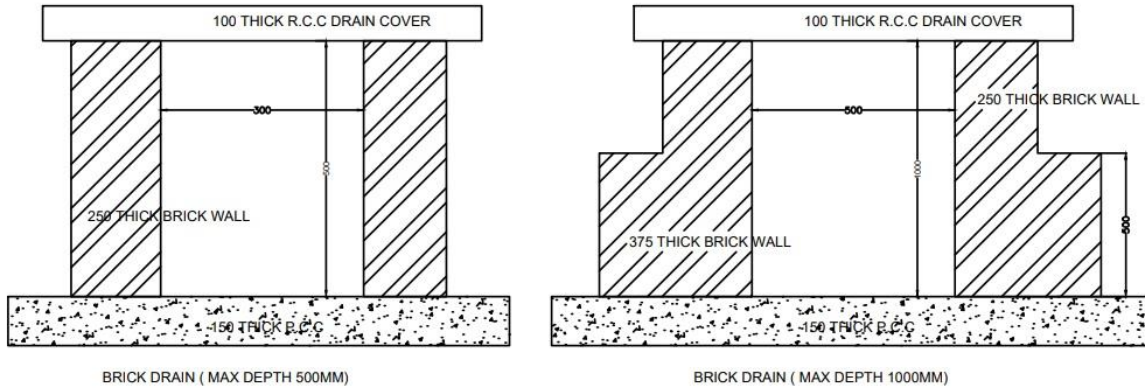
**WEBEL TECHNOLOGY LIMITED**

**Schematic Diagram - Main Drain and Tributary Drains for Runoff Rainwater Collection System Details of Tributary Drains for future provision**

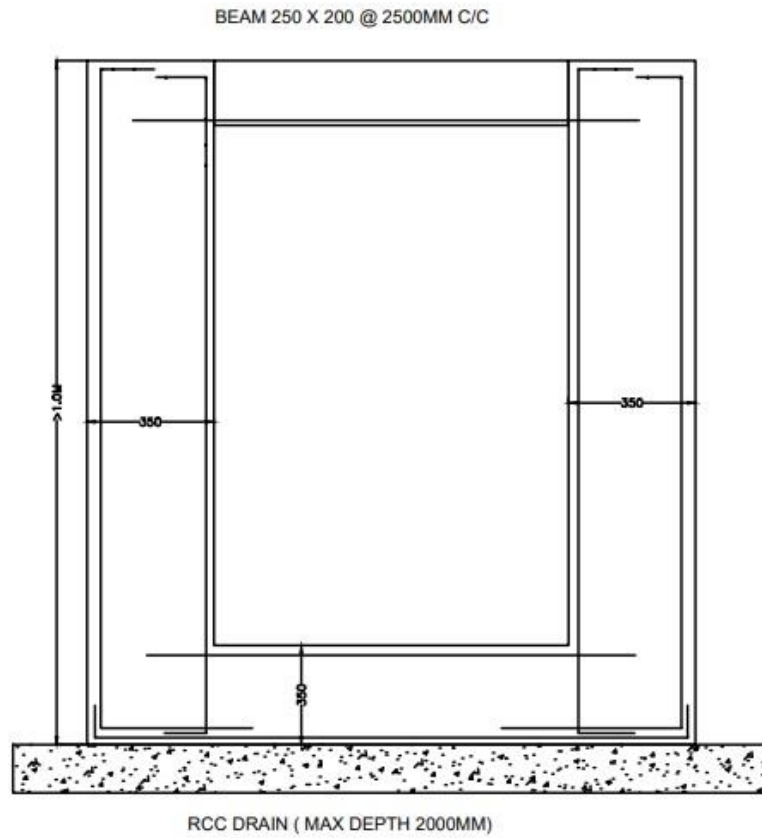


# WEBEL TECHNOLOGY LIMITED

## Sectional View of Tributary Drain



## Sectional View of Main Drain



### Annexure:

GAD & RC DETAILS OF P.D 600 KL RECTANGULAR SUMP (Drawing No.: INAS/PUR/UGR/STR/01)

